

SUSE Linux 10.0

Everything you need to
get started with Linux.

- Full, real Suse Linux (not OSS version)
- Clean, intuitive Linux desktop
- Spam blocker, antivirus, and firewall protection
- Complete digital-photo management
- Improved wireless and Bluetooth support

Includes:

KDE 3.4.2
Gnome 2.12
OpenOffice 2.0 pre
Firefox 1.0.6
RealPlayer 10.0.5
Gimp 2.2.8

Novell.

LINUX

MAGAZINE

On this DVD:

Suse Linux 10.0

Linux kernel 2.6.13
X.org 6.8.2
KDE 3.4.2
Gnome 2.12
OpenOffice 2.0 pre-release
KOffice 1.4
GIMP 2.2.8
Inkscape 0.42
Evolution 2.4
Firefox 1.0.6
Xen 3 preview
GCC 4.0
RealPlayer 10.0.1
Banshee 0.9.7
Kaffeine 0.7.1
MySQL 4.1.9

SUSE Linux 10.0

Everything you need to
get started with Linux.



In August 2005, Novell announced a dramatic new direction for Suse Linux. Suse, they said, was now a community project, with volunteer developers participating in reviewing, testing, and development. They announced that the first release of this new community-based Suse would be Suse Linux 10.0.

Now Suse Linux has finally arrived, and we are proud to include it as this month's Linux Magazine DVD. Suse Linux 10.0 combines Suse's long Linux tradition with the technical muscle of Novell and the agility of the community framework. On this DVD, you'll find the great tools that have made Suse Linux one of the world's great Linux distributions.

Installation

Plug in your Linux Magazine Suse Linux DVD and restart your computer. The easy GUI installer will set up your system with minimal fuss. The installer identifies your hardware and proposes a configuration for your system. You can accept the default configuration or customize your installation. Select packages, resize partitions, and even configure firewall settings from within the installer.

New and Updated

Suse 10.0 comes with a large collection of new and updated packages. Included on the

DVD is Linux Kernel 2.6.11, along with KDE 3.4.2 and GNOME 2.12. Updated components include GCC 4.0, glibc 2.3.5, and the Xen 3 technical preview.

Some of the new tools in Suse 10.0 include the AppArmor intrusion detection system, the Twinkle and Kphone VoIP systems, BitTorrent, Novell iFolder 3, Mozilla Thunderbird calendar, and Krita, an image-processing tool unveiled with the latest version of KOffice.

YaST

Suse Linux comes with YaST, one of the best and most respected configuration tools in all of Linux. YaST provides a convenient interface for managing software, hardware, networking, system configuration, security, and user accounts.

The Desktop

Suse Linux 10.0 offers an abundant collection of tools and components

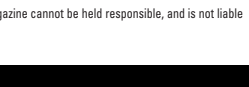
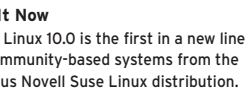
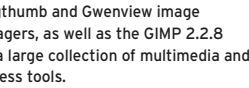
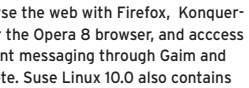
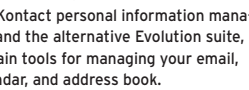
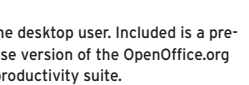
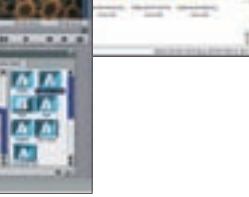
for the desktop user. Included is a pre-release version of the OpenOffice.org 2.0 productivity suite.

The Kontakt personal information manager, and the alternative Evolution suite, contain tools for managing your email, calendar, and address book.

Browse the web with Firefox, Konqueror, or the Opera 8 browser, and access instant messaging through Gaim and Kopete. Suse Linux 10.0 also contains the gthumb and Gwenview image managers, as well as the GIMP 2.2.8 and a large collection of multimedia and wireless tools.

Try It Now

Suse Linux 10.0 is the first in a new line of community-based systems from the famous Novell Suse Linux distribution. Install the Linux Magazine DVD today and get your first glimpse at the new Suse Linux.



While this Linux Magazine DVD-ROM has been tested and is to the best of our knowledge free of malicious software and defects, Linux Magazine cannot be held responsible, and is not liable for any disruption, loss, or damage to data and computer systems related to the use of this DVD.