



SLED 10 SP1

in virtualization, security, and 3D graphics. The Service Pack 1 edition, which is included on this DVD, provides additional enhancements, with new security features, user interface improvements, and updated hardware support.

monitor continues with enhanced Xen management and auditing tools. The version of Xen included with this DVD comes with updates such as paravirtualized frame buffers and fully virtualized guest support.

SUSE Linux Enterprise Desktop, also known as SLED, is Novell's enterprise-ready Linux desktop system. In SLED 10, you'll find a steady and stable Linux tailored for the workplace. Whether you're a Linux beginner or a seasoned admin, you'll find much to like with this thoroughly tuned and tested, industrial-strength distro.

What's Inside

SLED was designed with the goal of integration. The SLED developers wanted a trouble-free desktop that worked with Windows, worked with Linux, and worked with all the elements of the burgeoning Novell networking infrastructure. Version 10 rolled out new advances

Desktop

SLED is built around the core components of SUSE Linux, including the popular YaST2 management system, the Xgl 3D graphics architecture, and the Beagle search tool. Service Pack 1 comes with improvements to the main window, updates to the control center, and an enhanced desktop effects engine. You'll also find updated and enhanced versions of common desktop tools, including a custom Novell edition of OpenOffice.org that comes with better VB Basic macro support and extras such as an OpenXML/ODF translator.

Other advances include faster boot speed, an international clock applet, and a new disk space usage utility, as well as improvements to the the Banshee music player and the F-Spot photo management tool.

Virtualization

Virtualization has long been a priority at Novell, and SLED 10 builds upon previous improvements. The recent emphasis on the popular Xen virtual machine

Security

The AppArmor security tool offers a practical approach to mandatory access control. Also included with this version of SLED are improvements to desktop lockdown utilities, as well as new tools for encrypting home directories and securing disk partitions.

Try It

SUSE Enterprise Linux Desktop is Novell's sleek, stable, and practical desktop Linux system. Try this DVD to discover why SLED is the choice for many of Novell's biggest and most tech-savvy customers. We hope you enjoy this month's Linux Magazine SUSE Enterprise Linux Desktop DVD. ■

60 Days of Free Maintenance

Novell offers 60 days of free maintenance for SLED users. To register, go to <http://www.novell.com/evalcode>, then login to your account or create a new account. You will receive an activation code for the free maintenance agreement. At the end of 60 days, you'll need to purchase a support agreement with Novell in order to receive additional patches and updates.

System Requirements

- Processor:** Pentium 3, 500MHz or higher; Pentium 4, 2.4GHz recommended.
- Memory:** At least 256MB; 512MB recommended.
- Hard Disk:** At least 800MB for a minimal system; 2.5GB recommended.

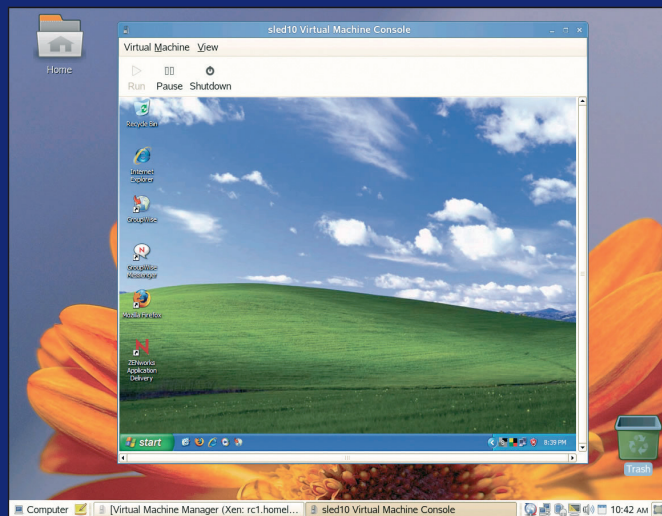


Figure 1: Run another operating system within SLED.

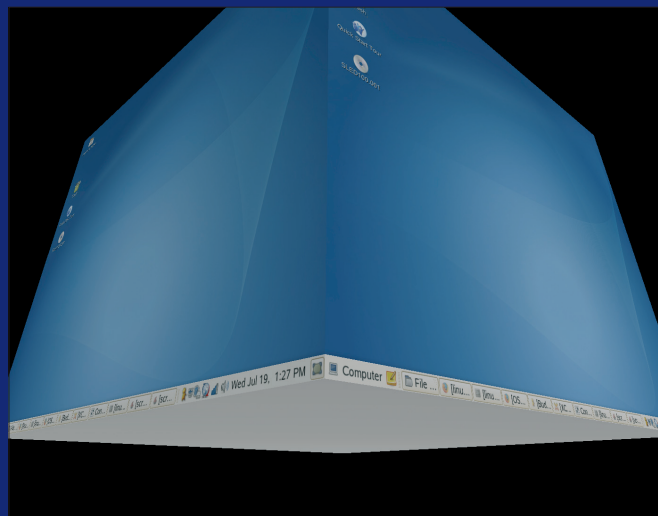


Figure 2: Enter the third dimension with the Xgl architecture.



HIGHLIGHTS

- Linux kernel 2.6.16
- Gnome 2.12.2
- KDE 3.5.1
- Xgl 0.32
- GCC 4.1.2
- OpenOffice 2.1 (Novell edition)
- GIMP 2.2.10
- Firefox 2.0
- Evolution 2.6
- Gaim 1.5.0
- F-Spot 0.3.5
- Banshee 0.12.0
- K3b 0.12.17
- Alacarte 0.11.2
- Baobab 2.12.2
- Sabayon 2.12.3
- Perl 5.8.8
- Python 2.4.2
- Acrobat Reader 7.0.9
- Citrix ICA Client 9.0

ADDITIONAL RESOURCES

- [1] Novell: <http://www.novell.com>
- [2] SLED product page: <http://www.novell.com/products/desktop>
- [3] SLED service and support: http://www.novell.com/products/desktop/services_support.html

HELP & SUPPORT

For a directory of SLED 10 documentation, see <http://www.novell.com/documentation/sled10>. For a summary of SLED forum options, see <http://support.novell.com/forums/2su3.html>. You'll find a collection of articles, tips, and answers for working with SLED 10 at the SLED Cool Solutions site: <http://www.novell.com/coololutions/sled>.

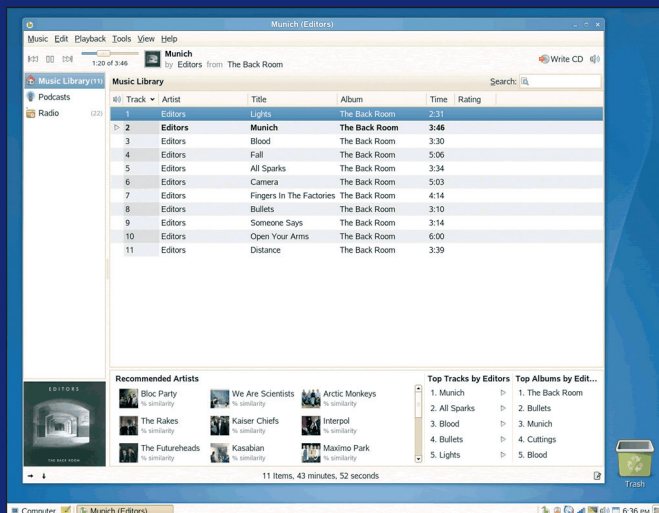


Figure 3: Manage your music with Helix Banshee.

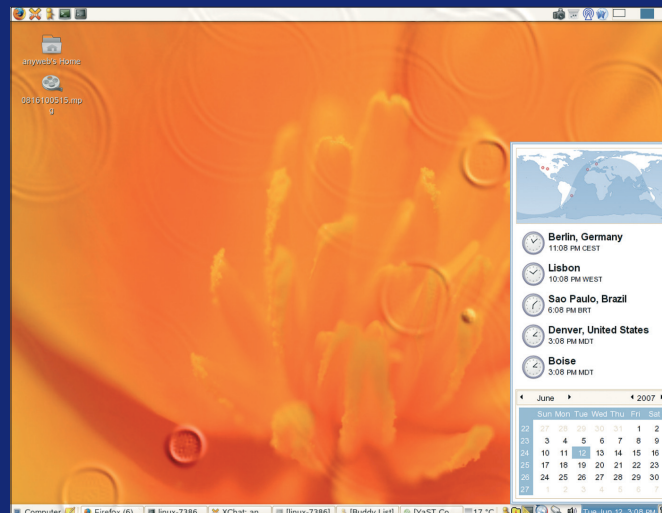


Figure 4: The World Clock applet tracks the time around the world.