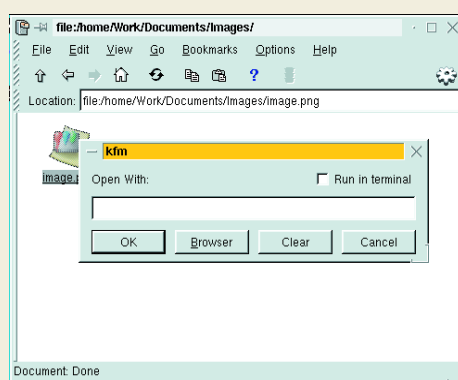


Step-by-step instructions for specifying a program to open a file type

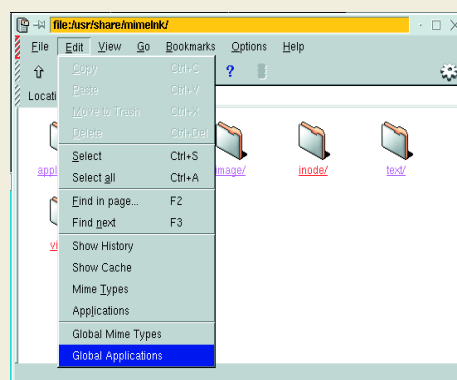
OPEN SESAME!

When the graphical interface KDE is first installed it doesn't know which programs should be used to open certain types of file. This means

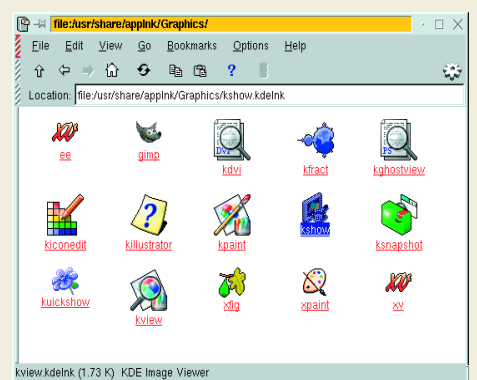
that you have to type the name of the program you want to use whenever you want to open certain files. If you have a program installed on your system that can open this type of file, you can make KDE use this program whenever you click on the file's icon. Here's how to do it.



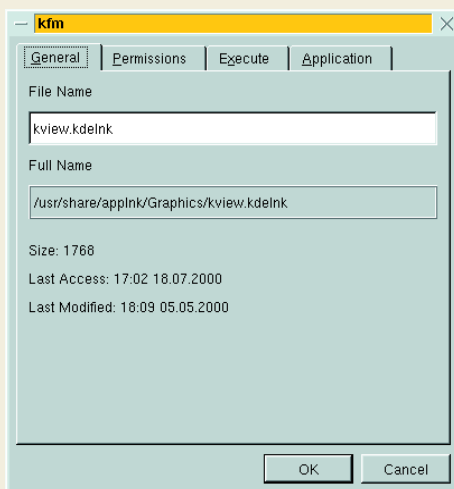
1. If KDE doesn't know what program to use to open a file when you click on its icon it will display this "Open With:" dialog box. You'll have to type the name of the program or click the Browser button and select a program from the list. It would be much better to have KDE open the file in this program automatically.



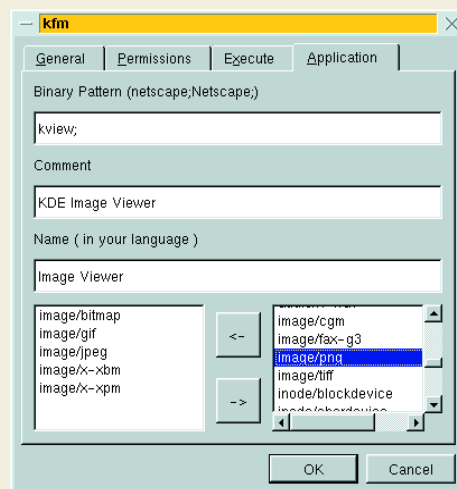
2. To make the change you'll need root privileges. Log in as root, then launch KFM by clicking on the "home" icon in the panel. Click on Edit, then Global Applications.



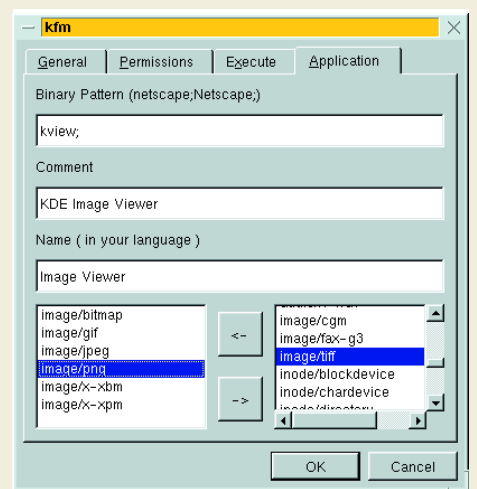
3. Locate the program you want to use to open this type of file. The folders under "Global Applications" represent submenus on KDE's K menu. The program icons usually have the name of the program rather than the name that appears on the menu. TIP: The descriptive name of the icon beneath the cursor appears on the status bar of the KFM window.



4. In this example we are going to associate a program with the "Portable Network Graphics" (PNG) file type. The program we will use is the KDE Image Viewer, kview. So we right-click the kview icon and select Properties from the pop-up menu.



5. Select the Application tab of the dialog box. At the bottom, you'll see two lists of items. These items are called MIME types. They are standard names for describing different types of file that are used on the Internet, and also by KDE. On the left are the MIME types of the files that KDE already knows the program kview can open. On the right are all the other MIME types known to the system.



6. Select the MIME type you want from the right-hand list. For a PNG file it is "image/png". Click the arrow button to move the MIME type to the left-hand list. Then click OK to close the dialog box. Log out of root and log in as a normal user. When you click on a PNG file you should now find that kview is automatically launched to open it.