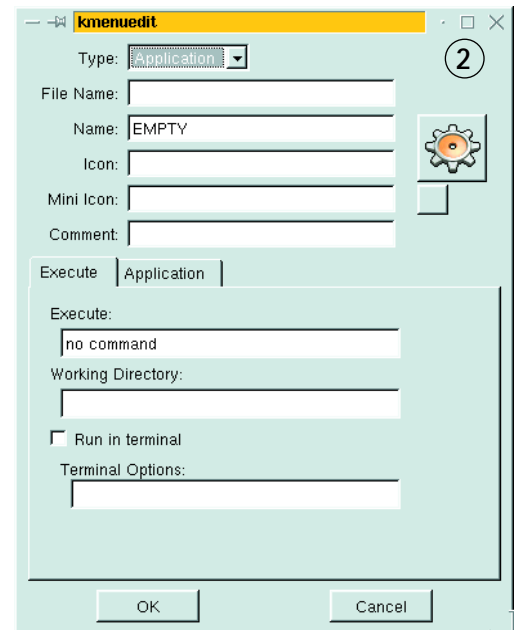
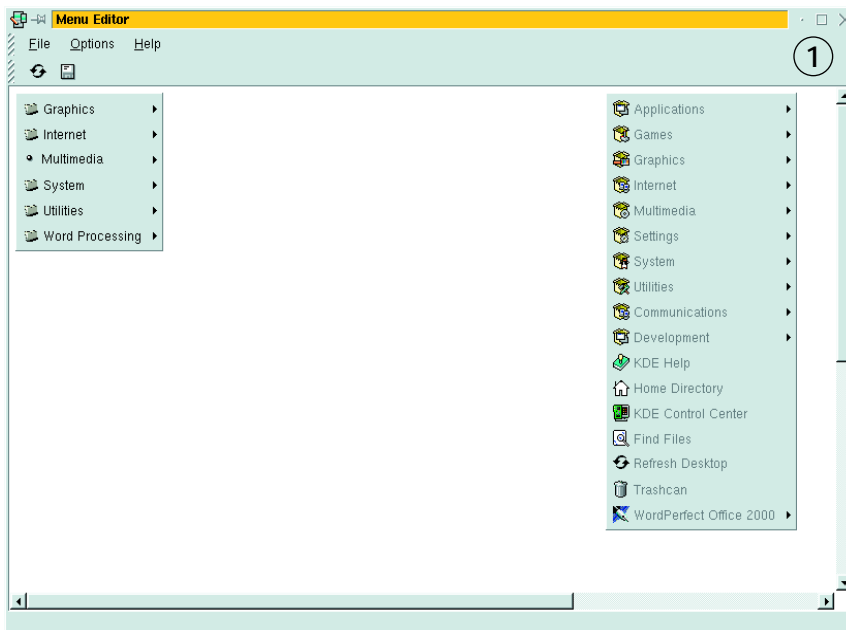


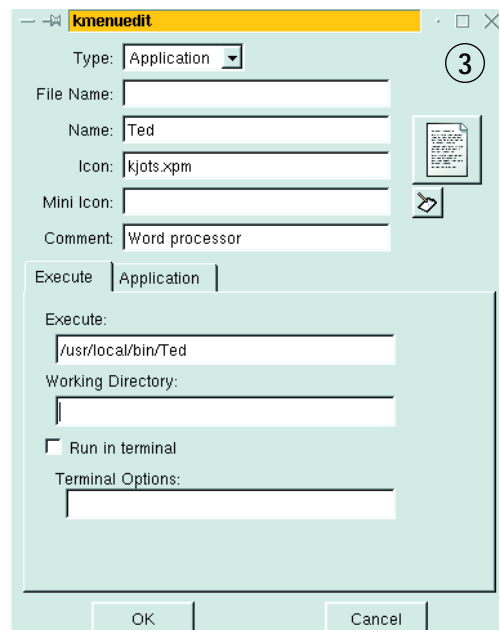
Step-by-step tips for adding an application to the KDE menu

# IT'S ON THE MENU

When you install an application on your Linux system, it may not automatically appear in KDE's K menu. There are several reasons for this. Not least is the fact that the compiler of the package does not know what graphical environment (if any) the installer of the software wishes to use. But it isn't a big problem. KDE provides a menu editor to enable you to customise the menu and add new applications to it in exactly the place you want. Note: in some distributions applications are added to the menu if you install them from a package using the distribution's own package manager. But to retain control over how your menus are configured it is better to add applications yourself.

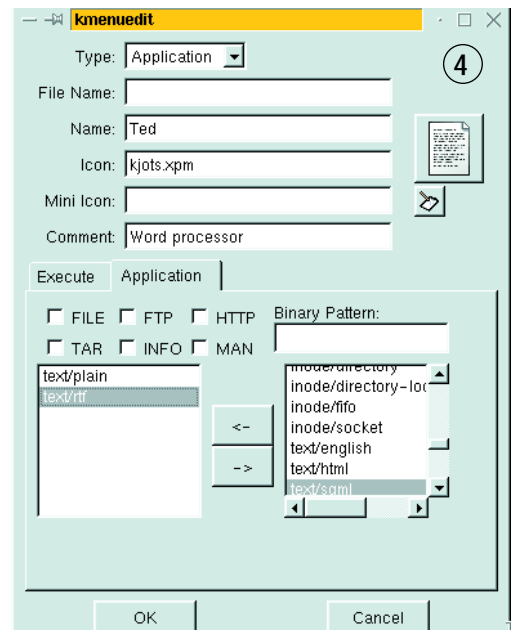


**Step 1** To start the menu editor, right-click the K button on the panel and click Properties from the pop-up menu. The menu editor will appear, displaying two menus. On the left is the local menu. Changes made to this will affect only the user you are currently logged in as. On the right is the default menu which all users can see. You must be root to make changes to this menu.



**Step 2** To add an item to an existing menu, select the menu item in the menu editor, right-click it and click on Add. An empty menu entry will appear. The Type: fields should show Application. Type a name for the menu item in the Name: field, where it says EMPTY, and type a more descriptive comment in the Comment: field - this will be used in a tooltip.

**Step 3** Click the large icon button and select a suitable icon from the gallery that is displayed. Click the mini icon button and select a different small icon, too, if you wish. In the Execute: field type the path to the executable program. If you don't know where it has been installed, open the package or archive you installed the application from and look at the list of files.



**Step 4** If the application can be used to open files of a particular type, click the Application tab. On the right you will see a list of MIME types for different sorts of file. Select the MIME types for the files that this application can open and use the arrow button to move them to the right. This will tell KDE which types of file this application can be used to open. Click OK when you are finished, to create the menu entry.