

# NEWSLETTER

## StarOffice going open source

StarOffice, the cross-platform integrated office suite acquired by Sun Microsystems from developer Star Division last year, is released to the open source community under the GNU General Public License on October 13th. News of the release, which will be the single largest open-source software contribution in GPL history, has been widely welcomed. It is hoped that the move will help establish the software as the leading office productivity suite on all major platforms.

StarOffice already runs under Sun's Solaris, Linux and Microsoft Windows, with a MacOS version due later this year. The prospect of an open office suite based on open standards and running on all major platforms might be enough to encourage more users to switch from Microsoft's closed, proprietary rival.

Central to the open source project will be a new foundation called OpenOffice.org. Modelled on the Apache Foundation, OpenOffice.org will be managed by Collab.Net which was formed a year ago to provide services for open, collaborative software development. OpenOffice.org will host the StarOffice source code as well as specifying XML file formats for documents and language-independent APIs. It will also provide Microsoft Office file filters so that other open-source developers can incorporate compatibility with Microsoft's widely used file formats into their own programs.

Access to the source code will be by means of the Collab.Net Sourcecast platform which provides the infrastructure and open source

tools developers will need. The source code base for OpenOffice.org will be that of StarOffice 6, the next version of the suite which is currently in development. This will use an architecture of separate applications and componentised services, rather than the integrated architecture it has today. Sun will continue to develop and market new versions of StarOffice Suite which will be based on OpenOffice.org. StarOffice 6.0, when released, will be a branded version of the OpenOffice.org reference implementation.

### Copyright

Sun will retain copyright to the source code but Sun's ongoing development work will be done as part of OpenOffice.org. The intention is that all code contributions to the OpenOffice.org project, including Sun's contribution of the StarOffice source code, will be made available under the Sun Industry Standards Source License (SISSL) in addition to the GPL. This dual-licensing approach is designed to allow all organisations and individuals to use the source code freely and openly as they choose. An important requirement of the SISSL license is that it requires compatibility with the GPL reference implementation of the OpenOffice.org source code, including APIs and file formats. Copies of both the GPL and the SISSL licenses are available at

<http://www.openoffice.org/licensing/>.

Leading open source exponents have



Star Office: soon to be open source

voiced their support for the OpenOffice.org project. Tim O'Reilly, founder and CEO of O'Reilly and Associates said: "Microsoft's lock-in on its Office file formats is arguably at least as important to its monopoly position as control of the operating system itself. The availability of StarOffice under the GPL will give Linux a boost on the desktop. But more importantly, the wide availability of StarOffice Suite's code for reading and writing Microsoft Office formats will allow other open source projects to provide compatible functionality as well. Open data is the other side of the open source coin."

Miguel de Icaza, president and founder of HelixCode Inc. said: "When I started GNOME I had two goals: a 100 per cent free, easy-to-use desktop environment and component architecture for GNU/Linux. With Helix Code and Sun working together, we can finally see this vision realised. The GNOME community is now investigating the very best way to integrate these."

### Info

**Sun:** 01252 399570

<http://www.sun.com/developers/openoffice/>

**OpenOffice.org:**

<http://www.openoffice.org>



## InterBase goes open source too

As announced earlier this year, Inprise has now open sourced the code for its cross-platform SQL relational database management system InterBase 6.0. However, plans to sell the InterBase product line back to a start-up venture led by Ann Harrison have been terminated. "After careful consideration, we determined that it was not in the best interest of Inprise/Borland stockholders for us to sell InterBase to a start-up entity that would initially be dependent on us for funding," said interim president and CEO of Inprise/Borland Dale Fuller. The move has caused little reaction from the developer community, some of

whom had felt that the open sourcing of InterBase was intended primarily to generate publicity for a product that had failed to make much impact on the market.

InterBase 6.0 is the latest version of the database and introduces several new features including long integer, date, time and date-time data types, extended compliance with SQL92, an open interface for defining new national character sets, plus performance and security enhancements. It runs under Linux, Solaris and Windows.

InterBase 6.0 has been released under a variant of the Mozilla Public License (MPL) ver-

sion 1.1. Developers using InterBase under this license will be able to modify the code or develop applications without being required to open source them. Both source and binary versions of InterBase are available for download from the Inprise/Borland website.

### Info

**Inprise/Borland:** 0118 932 0022

<http://community.borland.com/>

**InterBase:** <http://www.inprise.com/interbase/>



# IBM to sponsor European Linux development

Computing giant IBM plans to invest more than \$200 million over four years in a series of initiatives aimed at speeding up the migration of customers' and key European independent software vendors' (ISVs) systems to Linux. The initiatives will include setting up Linux development centres across Europe, alliances with other companies focussing on Linux development and the deployment of around 600 Linux consultants, hardware and software specialists and services professionals.

IBM has already opened development centres at Greenock and Hursley in the UK, as well as Paris and Montpellier in France, Boeblingen in Germany, Warsaw in Poland and Budapest in Hungary. IBM is providing technical specialists as well as servers, storage systems and software. The centres will support Linux development on IBM platforms from Netfinity servers right up to IBM S/390 mainframes. They will be open to all ISVs interested in developing for Linux.

The development centres will offer a range of facilities including training and technical support services. Testing facilities will include on-site or remote



**Mike Lawrie, General Manager, IBM EMEA**

access to IBM System 390, RS/6000, NUMA, AS/400 and Netfinity systems and IBM software. Performance measurement tools will also be provided to test how software performs under real-world workloads. Key industry partners such as Intel and Logix are working with IBM in these development centres.

"As customers and partners recognise the growing importance of Linux as a key e-business operating system there will be a tremendous demand for Linux-ready applications that can meet the workload needs of today's e-business environment," said Mike Lawrie, General Manager, IBM EMEA. "With these centres and these

investments IBM will dramatically speed up this process and start getting applications on Linux-ready servers into the marketplace aggressively during the second half of 2000."

## Info

**IBM: 01256 343000**

<http://www.ibm.com/linux/europ>

## Caldera acquires SCO

Caldera's announcement in early August that it was to acquire the Server Software Division and the Professional Services Division of The Santa Cruz Operation, Inc. (SCO) caused some surprise. Caldera plans to operate the Professional Services Division as a separate business unit of Caldera to provide services that meet the Internet and e-business needs of customers. The new company will offer what it calls an "Open Internet Platform" combining both "the low-cost, developer-accepted Linux operating system" and the "robust scalability" of UNIX services and solutions. Caldera Systems will form a holding company, Caldera Inc., to acquire the SCO assets. In return SCO will receive 28% of Caldera, Inc.

"This acquisition is an industry-changing event that puts Caldera front and center as the answer to the enterprise question," said Ransom Love, President and CEO of Caldera Systems, Inc. "Caldera will further broaden and validate both the Linux and UNIX industries and communities by providing open access to its unified Linux and UNIX technologies, and by offering support, training and professional services to customers worldwide."

David McCrabb, president of the SCO Server Software Division, said: "The new company will be a

very strong entity that we believe will compete successfully on a worldwide basis. Caldera, Inc. will incorporate a worldwide network of sales and support offices, a strong commercial UNIX system business and a rapidly growing open source company. This combination will be a force to contend with in the worldwide market for Internet solutions on high volume platforms."

Industry watchers are still pondering the significance of the acquisition. It's unlikely to lead to wholesale open sourcing of SCO's UnixWare source code. However, some UnixWare technology (such as NonStop clustering) may find its way into Caldera Open Linux.

## Info

**Caldera Systems:** <http://www.caldera.com/>

**SCO:** <http://www.sco.com/>



**Caldera Systems is to acquire SCO.**

## SuSE releases Linux for IBM S/390

SuSE Linux has released the first distribution of Linux for the IBM S/390 platform. A preliminary version was made available in July and includes the Linux operating system together with more than 400 applications including Apache, Samba, Sendmail and Bind, various development tools and a selection of other applications. By compiling them from source code, most other Linux applications will of course also run on the IBM S/390.

The availability of Linux on the IBM S/390 platform offers the benefits of reliability, security, scalability and high availability for businesses running mission-critical applications under Linux. It is also expected to show significant cost savings for ISPs running server farms. The use of VM/ESA makes it easy to add new Linux guests, so a new web server can be created and up and running within minutes.

The IBM S/390 architecture allows IBM operating systems such as OS/390, VM/ESA and VSE/ESA to run independently of each other allowing existing IBM mainframe users to use SuSE Linux to run web applications like Apache and Sendmail while at the same time maintaining their existing environment. This new release means that SuSE Linux now runs on all IBM products from ThinkPad to S/390 and establishes SuSE Linux as a major player in the enterprise server market.

## Info

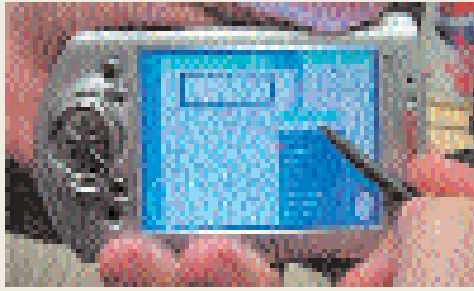
**SuSE Linux:**

0208 387 4088

[www.suse.de/en/](http://www.suse.de/en/)

## Compaq to sponsor open handheld development

Compaq has announced the Open Handheld Programme, a new initiative designed to stimulate innovation and research on handheld devices. Derived from Compaq Corporate Research's "Itsy" pocket computer project, the Open Handheld Programme will enable developers and researchers looking to explore applications for handheld computing to experiment with Compaq's iPAQ handheld by gaining access to the Linux-based source code for the device.



**You can hold Linux in the palm of your hand**

Compaq is making available a port of the Linux operating system to the iPAQ handheld. This exploits the iPAQ handheld's flash memory which allows the unit's operating system to be easily upgraded. In addition to the core Linux operating system, Compaq is providing other software components including drivers, X-Terminal emulation, handwriting recognition, touch screen and multimedia support. Compaq will also provide hardware specifications for both the iPAQ handheld unit and its innovative Expansion Pack system. Resources available to researchers and open source developers will include a development expansion pack for the iPAQ handheld computer that allows prototyping of application circuitry. This is in addition to the commercially available Compact Flash and PC Card expansion packs.

"The Compaq iPAQ Linux port is designed to encourage the development of novel user interfaces, new applications and innovative research projects for the future," said Bob Iannucci, vice president of corporate research for Compaq. "Through the Open Handheld Programme we hope to unleash the future potential of handheld and wearable computing and spark invention on the Linux platform."

To encourage innovation and the sharing of information, Compaq also is hosting a website ([www.handhelds.org](http://www.handhelds.org))

dedicated to open source handheld development. The website provides development tools, code, executable files and links to other sites including support for hardware. This site is designed to be a vendor-neutral repository of shared information for any handheld and wearable computing devices. For more information about the Open Handheld Programme visit the site.

### Info

**Compaq:** 0845 2704222 <http://www.compaq.co.uk/>

**Open Handheld Programme:** <http://www.handhelds.org>

## Major new distributions on the way

Despite the reluctance of kernel 2.4 to make its appearance, many distribution vendors are preparing major new releases. Corel has announced that the Second Edition of Corel LinuxOS will be previewed at the LinuxWorld show in San Jose, California on August 15, 2000. The new version is claimed to offer new functionality, better compatibility, new features and expanded hardware support. Corel LinuxOS Second Edition will have been available for download from <http://linux.corel.com/> since August 15th, and should be available in retail stores during October.

Red Hat has also announced "Pin-stripe", a beta release of the long-awaited Red Hat 7.0. This could be downloaded as we went to press from <ftp://ftp.redhat.com/pub/redhat/beta/pinstripe>. Core system improvements include kernel 2.2.16, glibc 2.1.91, XFree86 4.0.1 and GNOME 1.2. USB support for mice and keyboards is now included, and there is expanded hardware accelerated 3D support. New packages to be found in the distribution include gphoto, MySQL, AbiWord and dia.

### Info

**Corel:** <http://linux.corel.com/>

**Red Hat:** <http://www.redhat.com>

## Red Hat gets embedded with Ericsson

Red Hat and Ericsson have announced an initiative to jointly develop products using industry standards such as Java and open source technologies like Red Hat Embedded Linux. The first product from this partnership will be the Ericsson Cordless Screen Phone, expected to be

commercially available by the

end of the year. As part of

this initiative Ericsson will

work with Red Hat to

establish open technologies such as the

Embedded Red Hat

GNU develop-

ment tools

which will be

made freely

available to

developers through [redhat.com](http://redhat.com).

Both Red Hat and Ericsson believe there is huge market of open source and third party developers ready and waiting to design, port and develop new applications for innovative Linux based products such as those being developed by Ericsson Home Communications. Ericsson and Red Hat are also jointly establishing new mechanisms for the creation of web content and certification of applications for these Internet appliances. For operators this will mean new Linux-based infrastructure technologies and services, that will provide easy to manage upgrades across the Internet. For consumers, this will mean a range of easy to use and fun Home Communications appliances. For Linux fans it will mean one more step along the road to world domination and Linux everywhere!

For operators this will mean new Linux-based infrastructure technologies and services, that will provide easy to manage upgrades across the Internet. For consumers, this will mean a range of easy to use and fun Home Communications appliances. For Linux fans it will mean one more step along the road to world domination and Linux everywhere!

### Info

**Red Hat:** <http://www.europe.redhat.com/>

**Ericsson:** <http://www.ericsson.com/>

**First fruit of the partnership between Ericsson and Red Hat**



## SuSE Linux 7.0 released

The long awaited SuSE Linux 7.0 has been announced, and should be available by the time you read this. The product will be sold in two versions. The Professional version is aimed at experienced users and those wishing to use Linux as a server operating system. The Personal version is tailored for new Linux users and desktop users.

SuSE Linux 7.0 Professional provides IT professionals and advanced home users with a comprehensive collection of over 1500 of the latest Linux tools and software packages. The box contains six CD-ROMs and one DVD. There are additional software packages on the DVD which would not fit on to the CD-ROMs. The distribution includes software for implementing Internet and intranet solutions including web, proxy, mail, news, print and file servers. It is also suited to use for large database server applications thanks to its enhanced raw device support and the ability to address up to 4GB of main memory. Support for fully automated installation across a network is provided by means of the new ALICE tool (Automatic Linux Installation and Configuration Environment). Installation support for the SuSE Linux 7.0 Professional includes access to the SuSE Hotline and 90 days support. The price is £41.70 + VAT.

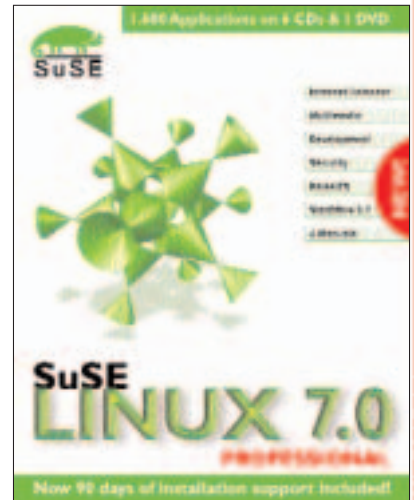
SuSE Linux 7.0 Personal targets newcomers to Linux and home users. The package includes three CD-ROMs which contain the core operating system and multiple applications including games, multimedia, imaging and Internet software. It also includes StarOffice 5.2. Installation is largely automatic using the YaST2 set up tool which has extended its hardware recognition to include devices, such as sound cards and printers. Internet access configuration using either a modem or an ISDN TA is now straightforward. Three easy to read manuals plus 60 days installation support should enable any user to get SuSE Linux up and running. The price is £24.70 + VAT.

SuSE is also releasing version 7.0 Professional Update for experienced Linux users. The software is the same as for SuSE Linux 7.0 Professional but instead of the full SuSE manual there is only brief information on the most important enhancements.

### Info:

**SuSE Linux: 0208 387 4088**

<http://www.suse.de/en/>

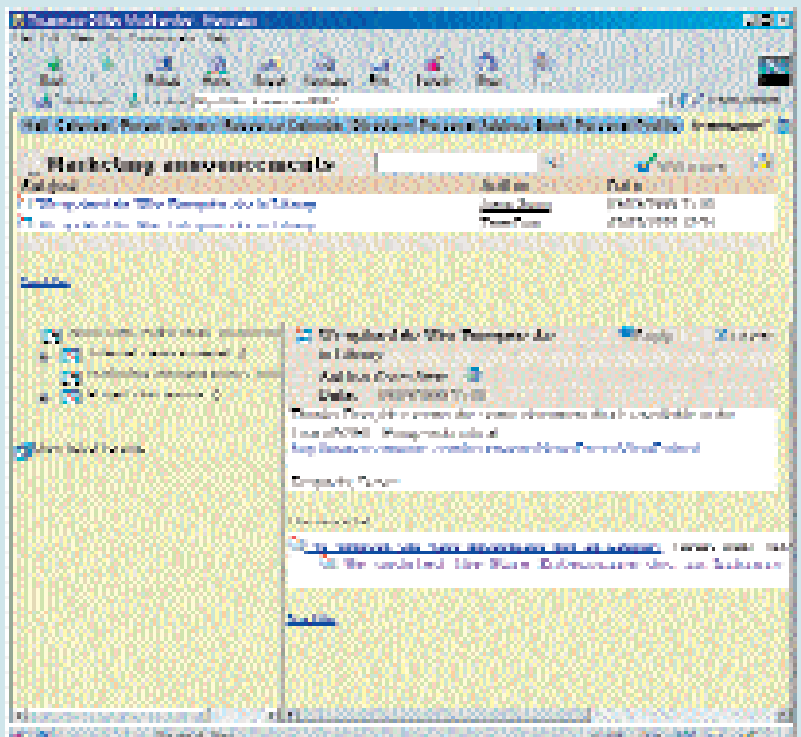


## New Teamware Office now shipping

Teamware has released Teamware Office 5.3 for Linux. It is a ready-to-run groupware product with a customisable user interface and state-of-the-art communications features.

Teamware claims that the product is easy to install and set up. It is supplied in RPM format ready for installation on Caldera Open Linux, Red Hat Linux, SuSE Linux and TurboLinux systems. No Windows clients are needed. All the functions of the product can be carried out using WebService, which permits access using a web browser such as Netscape. This includes the ability to create groups, libraries and discussion forums. User mailboxes can also be accessed using standard mail clients and the POP3 or IMAP4 protocols. The user interface is customisable using HTML templates and there are nine language variations to choose from.

Teamware Office 5.3 for Linux could be the ideal intranet solution for small or medium sized organisations. The product provides modules for electronic mail (Teamware Mail), discussion groups (Teamware Forum), document storage and retrieval (Teamware Library), meeting scheduling, resource allocation and time management (Teamware Calendar). Automatic meeting reminders can be generated and documents can be attached to appointments. The



Teamware Forum provides a group discussion board accessible using a web browser

product can be purchased online and is available as a single server package for up to 1,000 user accounts at a cost of \$1,000.

### Info

**Teamware: 01344 472068** <http://www.teamware.com/>

# Kylix tops the bill at Borland conference

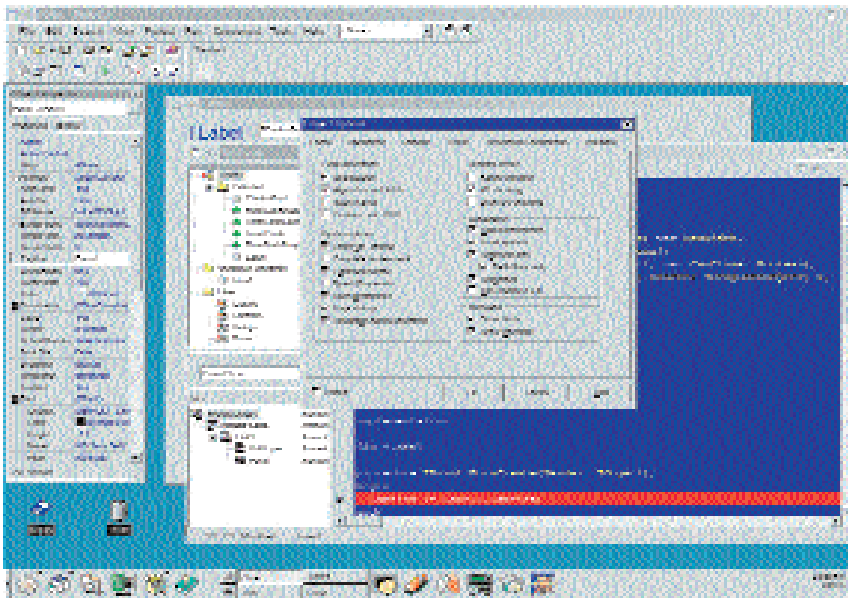
The sixth annual UK Inprise/Borland Developers' Conference will be held at the Royal Lancaster Hotel in London on September 24th, 25th and 26th. The conference programme contains much that will be of interest to Linux developers. A pre-conference training session held on the Sunday will include a first look at the long-awaited Delphi for Linux – code-named Kylix – which is expected to be launched at the conference. Other conference topics will cover moving to Kylix and a session on the new cross-platform object-oriented component library called CLX that the new development tool will use.

The conference will also feature sessions on

JBuilder, Borland's Java-based enterprise development tool. Version 3.5 of JBuilder, which has now been available for several months, enables the development of applications which run without modification or recompilation on Linux, Solaris and Windows platforms. Other sessions will cover InterBase, Borland's database server which is available for Linux and other platforms.

Inprise/Borland, which recently announced a return to profitability after years of losses, is rapidly becoming the major player in the Linux development tools market. Its flagship product Delphi has long been regarded as the best rapid application development (RAD) tool for the Windows platform. The launch of a Linux version will be a milestone for developers wishing to deploy Linux in both back and front office applications. According to Borland, Delphi for Linux will support Apache Server applications and facilitate a migration path to Apache from other web servers (including Microsoft Internet Information Server and Netscape servers) for existing applications developed using Delphi for Windows, C++Builder and Microsoft Visual Basic.

Rapid application development comes to Linux



## Info

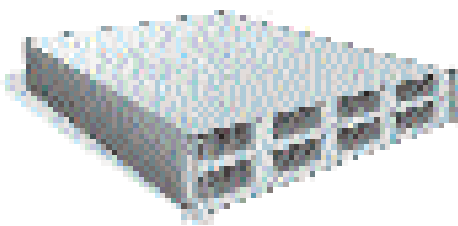
**Conference:** 0208 789 2250

<http://www.inpriseconference.com/>

**Borland:** 0118 932 0022

<http://www.borland.co.uk/>

## New compact RAID enclosure from VA Linux



**The VA Linux 9008:**  
Over half a terabyte of storage in a single 2U rack-mount unit

VA Linux Systems has launched what it claims is the first 8-drive 2U Ultra2 SCSI storage enclosure system. The VA Linux 9008 2U storage system features eight hot-swappable disk drives in an ultra-dense 3.5in. high enclosure and can provide up to 584GB – over half a terabyte – of storage capacity for customers in Internet co-location environments.

Designed for high reliability and availability, the VA Linux 9008 storage system has both redundant power supplies and

redundant cooling modules as standard features. The eight disk drives are hot-swappable, and the system uses a cableless design that allows access to fans, power supplies and drives without removing it from a rack. Like the VA Linux 2200 series servers, the 9008 storage system has LEDs that enable enclosure monitoring of temperature, drives, fans and power.

The 9008 storage enclosure currently supports hard disk drives of up to 73GB with speeds of up to 10,000 rpm and is designed to support next-generation hard drives when they become available. The driver carrier design is the same as that of the VA Linux 2200 series server so the same spare hard drives can be used in both. Both 1" and 1.6" drives are supported. The VA Linux 9008 storage system extends current storage options for the VA Linux 2200 series and 3500 servers and will be a component of larger network-attached storage (NAS) solutions planned for release later this year.

## London to host first European Apache Conference

The Apache Software Foundation will hold its first European conference ApacheCon 2000 Europe at the Olympia Conference Centre, London on October 23rd - 25th, 2000. The conference is being sponsored by Covalent Technologies, IBM and Sun Microsystems. Billed as Europe's first open-source software conference for developers, at least 400 developers are expected to attend.

Three concurrent lecture streams will run throughout the three-day programme. Topics to be covered will include writing Apache modules, using Python, Tcl and Perl, Java application servers, PHP, SSL, XML and migrating Netscape servers to Apache. Sessions will be presented by leading experts from around the world. An associated trade show will be open on 24th and 25th October.

## Info

**Conference:** <http://www.apachecon.com/>

## 24/7 support now available from SuSE

SuSE Linux has restructured its technical support services in order to provide 24 hour a day, 365 days a year support for its enterprise customers. It will now be possible to choose from two service plans called Basic and Productive.

The Basic service is aimed at Linux novices and users who are migrating from other operating systems. Customers receive 60 days of installation support by telephone, fax or email when they purchase a packaged SuSE Linux distribution. If support is needed which goes beyond installation, customers can then purchase Callpacks. A Callpack entitles the user to up to 20 minutes of support time.

The Productive service extends the existing SuSE technical support offering to meet the needs of professional Linux users. The service provided can be tailored to individual requirements. Options range from support during office hours only through to the 24 hour a day, 365 days a year availability of specifically assigned SuSE support engineers who are familiar with the customer's system. The Productive service also includes support of specific applications and the Linux system itself at the source code level.

Announcing the new support programme, Rüdiger Berlich, Managing Director of SuSE in the UK said, "24/7 support is a crucial prerequisite for the use of Linux in business-critical applications. With 100 support engineers worldwide we have an unrivalled infrastructure to offer support services at this high level, strengthened by our continuing training programmes and world class developer laboratories."

### Info

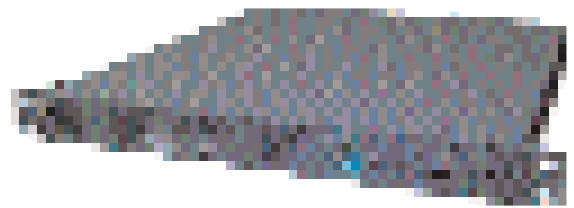
**SuSE Linux: 0208 387 4088**  
<http://www.suse.de/en/>

# New entry-level server from VA Linux

VA Linux Systems has introduced the VA Linux 1150 server, a customisable entry-level 1U (45mm, 1.75in. high) Linux server designed for Internet data centres.

The VA Linux 1150 is a customisable, low-cost 1U Web server that uses a single Intel Pentium III processor. Options include capacity for up to 2GB of memory and one or two front-accessible SCSI hard drives. Standard features include dual Ethernet network interface cards and a slim CD-ROM and floppy drive. Like all VA Linux systems the 1150 server is supplied configured for optimal Linux compatibility and includes VA's Total Linux Coverage (TLC) support and service. Pricing starts at around £ 1,700 for a basic configuration.

The new server complements VA Linux Systems' 1000 series of high-performance 1U servers to create what the company says is the industry's broadest offering of ultra-dense rack-mount Linux servers for Internet infrastructure. "Leading ASPs, e-businesses and Internet hosting providers today are demanding customised Linux server solutions as they build out their Internet infrastructure to support the rapid growth that comes with success," said Robert Patrick, director of product marketing for VA Linux Systems. "The VA Linux 1150 server offers a cost-effective solution that can reliably scale, backed by expertise and services that move at the speed of Open Source. All of our product designs take full advantage of the flexibility of the Linux operating system, enabling us to combine build-to-order hardware and software in a way that no other vendor can."



The VA Linux 1150 server has a compact size and low cost

### Info

**VA Linux: 0870 2412813** <http://www.valinux.com/>

## Cyclades launches entry-level router

Cyclades has launched a new entry-level Multiprotocol Access Router aimed at small to medium sized offices and Internet Service Providers (ISPs). The Cyclades PR1000 offers both Ethernet LAN and serial WAN routing capabilities for LAN-to-LAN and LAN-to-Internet applications.

Designed to be easy to install and use, the router has a menu-based configuration. Monitoring and management tasks can be carried out using a console port on the device, or from anywhere on the network using SNMP or Telnet. The router software is held in flash memory and can be upgraded over the LAN or WAN, helping to cut the cost of maintenance.

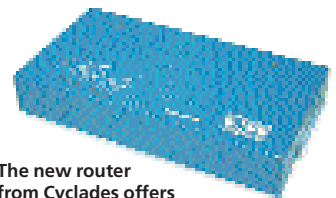
The Ethernet 10/100 Mbps LAN interface and V.35/RS-232/X.21 serial WAN interfaces support a variety of network protocols and ensure network

inter-operability. Features such as VPN, NAT, packet and service filtering, password control, RADIUS/TACACS, PAP and CHAP authentication make the Cyclades PR1000 secure and protect the network from unauthorised access. Support for traffic shaping, dial on demand, and dedicated WAN support allows flexible and reliable remote networking.

There are two models: the PR1000/RSV (V.35 or RS-232) and the PR1000/X21 (X.21). Each has a list price of £ 430.

### Info

**MPT Data Products: 01724 280814**  
<http://www.mptdata.co.uk/>  
**Cyclades: <http://www.cyclades.com/>**



The new router from Cyclades offers easy use and low maintenance costs

# System minder arrives in UK

A new tool for open-source software end users has recently been launched in the UK by Massachusetts-based Acrylis, Inc. It will be sold by Linux reseller LinuxIT. WhatifLinux.com is a subscription-based service aimed at making the management of open source software simpler and more reliable. It profiles the software running on subscribers' servers and then provides the system administrator with information about relevant updates and new releases. "WhatifLinux enables companies to take full advantage of the flexibility and continuous evolution of open-source software, whilst removing the associated headaches for sysadmins" claims Reg Broughton, president of Acrylis.

WhatifLinux.com is based on a three-tier service architecture that includes Intelligent Agents, a console and a Knowledge Base. Intelligent Agents are small Java-based applications that run on each of the systems being monitored. The agents use policies that are set up for each system to determine when defined thresholds are crossed and whether corrective or diagnostic action is required. The agents constantly check the WhatifLinux.com knowledge base for news and updates.

The console is a repository for status information collected from the agents and is accessed using a web browser. Designed specifically for system administrators and

support staff, it warns them of matters requiring attention and allows them to take corrective action such as installing or uninstalling software packages, patches or updates. Administrators may also invoke decision support analysis using the "Whatif" feature which analyses software dependencies in order to determine the consequences of installing or uninstalling patches and other software. This allows the administrator to be confident that a patch or new program will work on the server before installing it.

The Knowledge Base contains information about software dependencies and conflicts, software alerts and problems. Software components tracked by the Knowledge Base include system software, utility software and application software. Information on the packages to be monitored is collected from the agents on each customer's system. This enables WhatifLinux.com to send alert information directly to customers who are using the affected software.

## Info

**LinuxIT** 0117 905 8718

<http://www.linuxit.com/>

**Acrylis:** <http://www.acrylis.com>

# Red Hat to provide support for Dell customers

Red Hat has extended its strategic alliance with Dell Computer Corporation to provide bundled technical support for buyers of Dell computers. Dell customers will now be able to purchase a range of Red Hat Services direct from Dell, including annual per server support. Customers with large numbers of servers will also be able to purchase a dedicated technical support account. The annual support offering will include unlimited access via telephone or the web for installation, basic and advanced configuration and systems administration plus one year of software updates via priority ftp access.

"Dell and Red Hat recognise the importance of being able to offer One Source Alliance customers the highest quality Linux support," said Ian Cole, Professional Services Director Red Hat Europe. "The Annual Per-Server support is our most flexible, scaleable programme for keeping systems supported and secure. The solution is designed to expand as an organisation grows and is ideal for companies across the spectrum from small businesses to large enterprises. It also provides customers with enterprise support at a fixed price per server."

## Info

**Red Hat:** 01483 563170

<http://www.europe.redhat.com>

**Dell:** 0870 1524699

<http://www.dell.com/linux>

## TurboLinux provides super-computing solution

TurboLinux announced that its innovative EnFuzion software has been deployed at leading financial company J.P. Morgan & Co. Incorporated to power the firm's worldwide risk management system for fixed income derivatives. TurboLinux EnFuzion is software that runs on Linux, all major Unix versions and Windows NT. It turns a computer network into a high speed, high availability, fault tolerant supercomputer. It integrates into an existing IT infrastructure and uses the idle time on workstations and servers to boost computation speeds by up to 100 times. The software works with existing customer applications without requiring modification. It provides node failover and automated job scheduling that takes advantage of idle CPU cycles on cluster nodes.

Evaluated at J.P. Morgan's London office for the past year, EnFuzion is now in produc-

tion use. The firm is now increasing its deployment to more than 1,000 cluster nodes, including an installation at J.P. Morgan's New York corporate headquarters.

"As a market leader in fixed income swaps and derivatives, our firm's demands for computing power in this field are virtually limitless" said Michael Liberman, head of Global Swaps and Derivatives Technology at J.P. Morgan. "Deploying EnFuzion has allowed us to harness the power of hundreds of powerful desktop workstations during times when they would otherwise be sitting idle. We continue to move more of our critical calculations and processes to this architecture."

## Info

**TurboLinux:**

01752 313190

<http://www.turbolinux.com/>

