

News and Programs around GNOME

# GNOMO-GRAM

BY BJÖRN GANSLANDT



**GNOME and GTK are getting more and more popular all the time. New features, tools and utilities for them seem to appear on an almost daily basis. If you count yourself as a GNOMEophile then read on, as the Gnomogram column is where you'll find the latest news, info, hints and tips on these very subjects.**

## GNOME Foundation Board selection

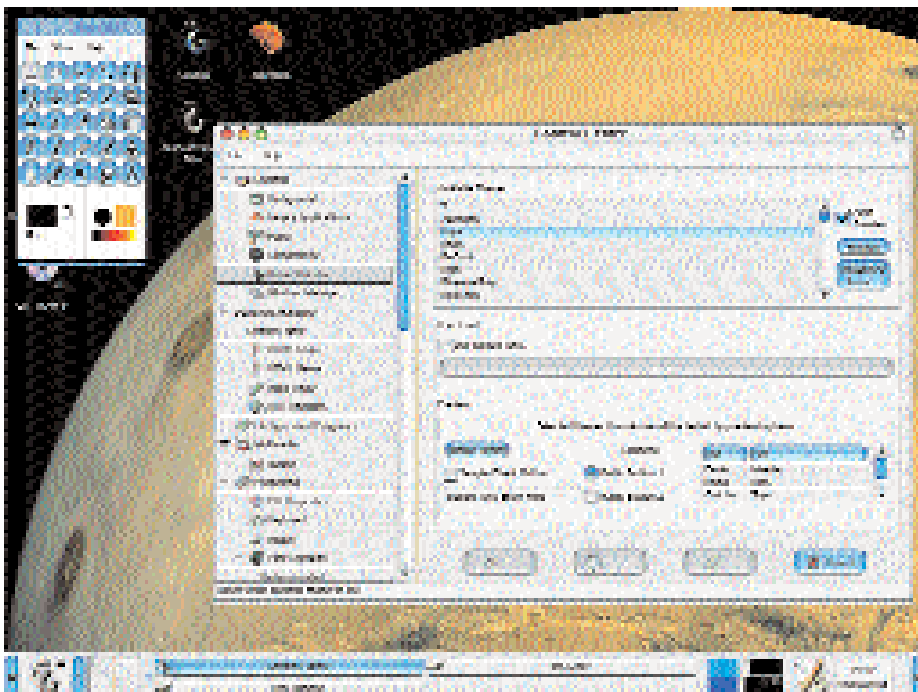
At the time of writing, the very first GNOME Foundation Board is set to be elected. This new committee will supersede the GNOME Steering Committee and, as far as possible, in a distributed project like GNOME, try to steer its future

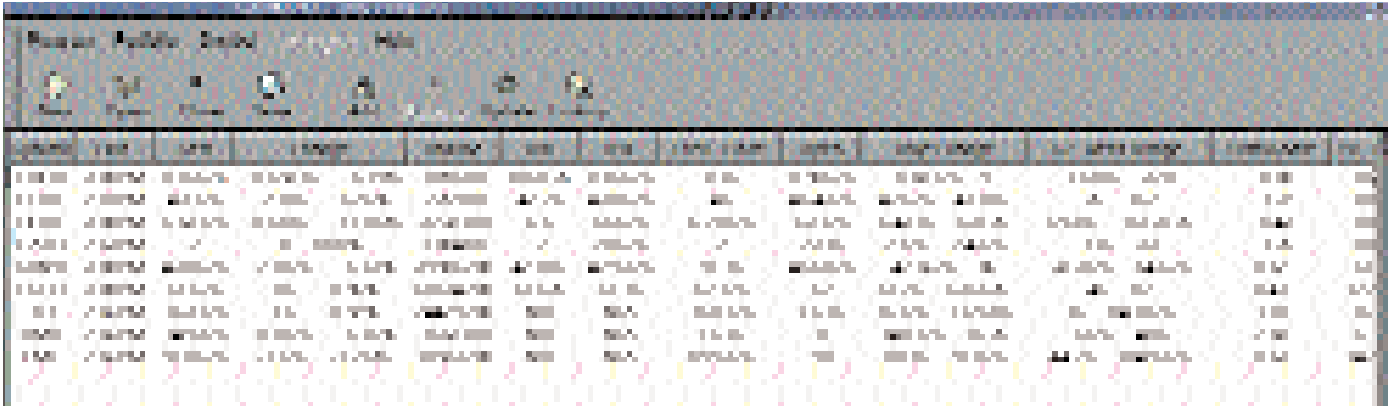
The AquaOS Look

development. The Board will also co-operate with other free projects and firms, manage funds, organise conferences and form a contact point for the press. There will be eleven GNOME Foundation Board directors in all, and they will be elected via e-mail from members of the GNOME community. No more than four directors will be allowed to belong to any one firm. So far there have been very few surprises among the nominations, although there has been some criticism that there are too few real experts to choose from. More comprehensive information on the GNOME Foundation can be found at [foundation.gnome.org/charter.html](http://foundation.gnome.org/charter.html).

## Installing themes

More and more programs seem to support themes these days. If you've been on the moon for the last few years, themes basically allow you to redesign a program's user interface to a certain extent. All this can make programs look very nice, but if every program ends up with an individual theme (and therefore its own individual Look-and-Feel) the end result will be more confusion than user-friendliness. The way around this is to get all programs to use the same theme. This has always been the case with GNOME, of course, as all its programs are based on the GTK library. It is well worth trying themes out if you've not done so already. The current GTK theme can be altered via the control centre using the *Workstation/Select themes* option. And if you don't like any of the standard themes, you can always





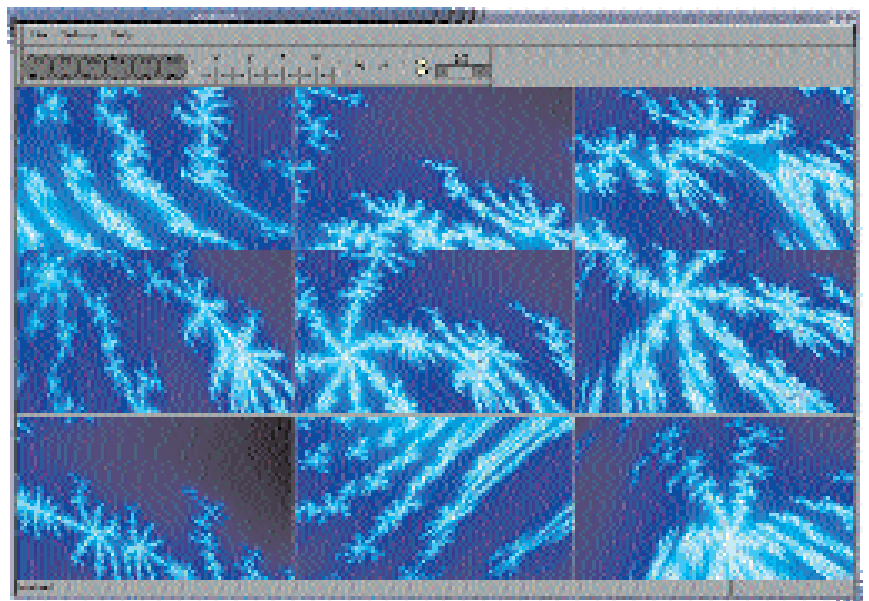
download some new ones. Some of the best are available at [gtk.themes.org/](http://gtk.themes.org/). Once downloaded, you can install them with the *install new theme* option found under the above-mentioned *Workstation/Select themes*.

It's worth noting that a separate window manager is responsible for the design and behaviour of windows under GNOME. Consequently, the GTK-theme selected has no effect on these. GNOME is actually capable of working with many different window managers, but *Sawfish*, formerly *Sawmill*, is by far the most popular.

Sawfish's themes can be changed in the control centre under *Window manager Sawfish/Appearance*. Other window managers can, incidentally, be selected using the *Window manager* option and then configured with *Call up configuration tool for windowmanagername*. Sawfish themes can easily be downloaded from [sawmill.themes.org/](http://sawmill.themes.org/), but then have to be manually copied to `~/sawmill/themes/` or `/usr/share/sawmill/themes/`. The latter directory is where the theme for all users is installed. For all screenshots in this article, by the way, the Sawfish theme *Blue-steel* and the GTK theme *Coolness* are used.

## Gnofract 4D

Gnofract 4D ([gnofract4d.sourceforge.net/](http://gnofract4d.sourceforge.net/)) is a program that renders four dimensional fractals that represent a mixture of Mandelbrot and Julia fractals. In this four dimensional system one can not only move in four directions, but also turn about six planes. The proportion of Julia or Mandelbrot fractals in the fractal displayed varies depending on the position in this system. In addition to these functions, Gnofract 4D also supports colormaps (which are, incidentally, in the same format as used by *Fractint*). These colour in the fractals in various ways. You can also enlarge a fractal, at least as far as computing depth allows. Apart from the normal mode, an explorer mode is also available that is strongly reminiscent of Kai's Power Tools and allows the fractal settings to be mutated at random. A slider controls how much the settings should be mutated. All fractals generated can be stored either as a standard image file or as a set of parameters for the fractal.



## GnomePM

GnomePM ([www.geocities.com/lordzephyroth/gnome-pm.html](http://www.geocities.com/lordzephyroth/gnome-pm.html)) is designed to replace the *Yahoo! Java Portfolio Manager*, and provides the latest price information on shares in an online portfolio. Anyone who has ever tried to execute Java applets under Netscape will certainly welcome this alternative.

GnomePM can manage several portfolios for which it displays the price, volume and lots of other interesting information on each individual share contained in it. Using the *More Info* menu option, it is also possible to load charts, headlines, valuations and other data for the shares into a standard browser. Even if you don't know the symbol for a share, GnomePM can find it if you state the name of the company. All the data used is normally gathered from the American Yahoo! Finance site, although it is also possible to specify a different Yahoo! Host under *Program/Preferences*.

As is often the case for such tools, all prices GnomePM gets from Yahoo are delayed, trailing the markets by 15 to 20 minutes or so. Talking of delays, GnomePM updates its data every 5 minutes by default – far too slowly for many users – but this can be changed under the *Program/Preferences* menu option. ■

[top]  
Linux IPOs versus  
technology blue chips

[above]  
Gnofract 4D in explorer  
mode

## The author

*Björn Ganslandt is a student and a passionate bandwidth squanderer. He can often be found at [irc.gnome.org](http://irc.gnome.org) under the nickname "Ansimorph".*