

SourceForge

SourceForge.net, an ASP for open source developers, now supports more than 100,000 registered users, according to an announcement from the Open Source Development Network (OSDN), a division of VA Linux Systems, which is dedicated to promoting Open Source software development.

With a user base that has grown by about thirty percent a month since its launch a year ago, SourceForge.net's base of supported projects include MySQL, Tcl, Python, XFree86, KDE and Squid.

John "Tiberius" Hall, vice president of strategic planning at VA Linux Systems said, "The rapid growth of SourceForge.net during its first year of service demonstrates the growing popularity of the Open Source development model across a wide range of platforms, as well as the popularity of the SourceForge toolset... By working with ibiblio, we hope to further improve SourceForge.net's ability to catalogue, archive and distribute Open Source software and documentation."

Paul Jones, director of ibiblio.org which provides free information, including software, music, literature, art, history, science, politics and cultural studies added, "The compatibility of the goals and key directions of SourceForge.net and ibiblio, as well as complementary research and service interests, make this relationship a great boost for the Open Source Community. Our relationship with SourceForge.net will help us bring the state of contributor-run archives and libraries to a high level very quickly. There are no limits in sight." ■



SuSE's help system has been revised, making it even more user-friendly

SuSE Linux 7.1 is out

SuSE Linux is delivered in two versions – Professional and Personal. The Professional edition contains seven CDs and a DVD as well as four comprehensive Manuals. The Personal edition comes with three manuals and three CDs. Retail prices should be around £29 for the Personal Edition and £49 for the Professional (including VAT). SuSE also offers 60 days installation support for the Personal Edition and 90 days for the Professional.

Love it or hate it, SuSE has once again increased the amount of software to over 2000 software packages in the case of the Professional Edition. Additionally, you will find a series of bundled commercial applications, both, demos and full versions.

In SuSE Linux 7.1, customers have the choice between the proven kernel version 2.2.18 and the brand new kernel version 2.4. Along with this kernel version come many additional plug and play, USB and power management features. Professional users will appreciate the support for up to 64 GB of

main memory and the much-improved scalability of this kernel version.

Thanks to the hardware detection that attempts to identify both your graphics card and monitor, the configuration of the X Window system is a matter of just a few mouse clicks. Instead of the old Version 3.3.6 for ancient graphics cards, you can also choose XFree-4.0.2 as your default X-Server, including the latest drivers for 3D hardware acceleration for a series of common accelerator cards based on Nvidia GeForce(256/2GTS/2MX) and ATI Rage128/Rage128Pro.

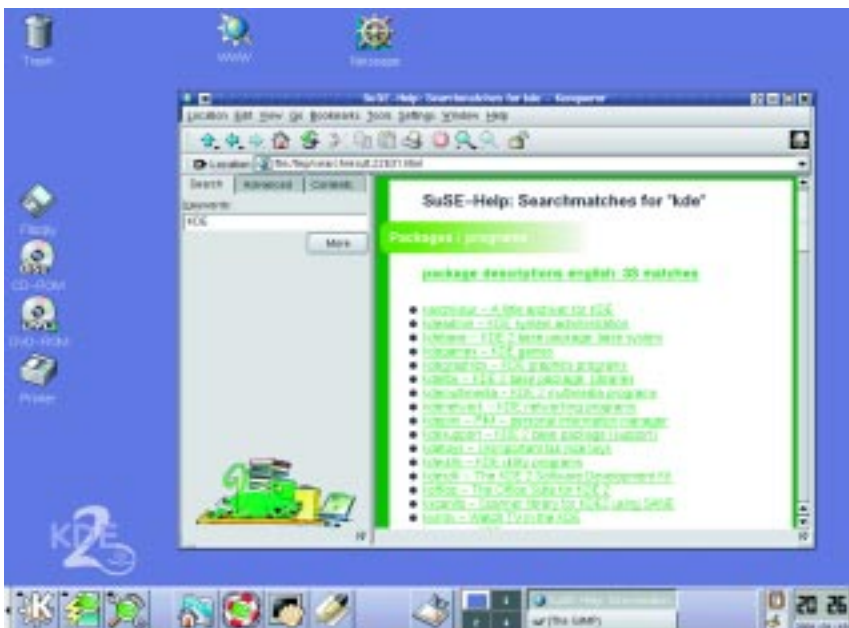
During Installation, it is now possible to resize an existing FAT32 partition (Windows95/98/Me) with the help of a graphical front end to "GNU parted", if a Windows partition covers the complete hard drive.

The newly released KDE2 desktop environment (Version 2.0.1) largely improves the usability of Linux as a desktop platform. Along with the basic environment SuSE delivers a multitude of different KDE applications which are integrated into the desktop. The KDE desktop has been customised to SuSE's environment. Also included for the first time is also the KOffice Suite.

Although KDE is the default desktop, SuSE Linux comes a very wide variety of other Window Managers and Desktop Environments to choose from including the very popular GNOME desktop environment.

Among the software offered the StarOffice set of productivity tools is a long-time favourite (Word Processor, Spreadsheet, Presentation graphics and much more), now at version 5.2. StarOffice is even able to handle the import and export of MS Office documents, spreadsheets and presentations. There have been stability-issues with StarOffice in the past, but with the present version these seem to have gone.

SuSE Linux 7.1 might be seen as "just" an upgrade of version 7.0. But with its plethora of new features and updated basic software (Kernel 2.4.x, XFree-4.0.2, KDE-2.0.1), it really deserves to be called a ".0"-less Distribution. ■



Virus Warning



A new Internet worm that targets computers running Red Hat Linux is being described by some virus experts as the first successful attack on the Linux operating system, which is widely considered to be one of the best protected platforms around.

To penetrate computers that have Red Hat Linux 6.2 or 7.0 installed, the *Ramen* worm exploits three security breaches loopholes - *in.ftpd*, *rpc.statd* and *LPRng*. These were identified and closed by developers last summer. The breaches are from the *Buffer Overflow* category and could enable hackers to send an executable code to the remote system and run it without the user's authorisation.

The *Ramen* worm infects a system by sending data to a target computer receives data which then overflows the system's internal buffer. This enables the worm code to gain root privileges. It then initialises the command processor that executes the worm's instructions. Next the worm creates the */usr/src/.poop* folder and launches the "lynx" Internet browser. There it downloads the worm's archive *RAMEN.TGZ* from a remote system. After this, *Ramen* opens the archive and executes its main file *START.SH*. The worm changes the content of *INDEX.HTML* files found on the system, so that when affected HTML-files are run they display the following message:

```
RameN Crew
Hackers 10000000000000000000ve noodles.
```

There is no additional payload.

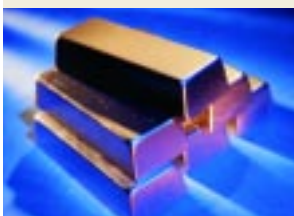
Denis Zenkin, head of corporate communications for anti virus software

developer Kaspersky Lab, said that to date he has received no reports of *Ramen* in the wild. However, he added, "It is important to emphasise that the breaches exploited by the *Ramen* worm are also found on other Linux distributions, such as: Caldera OpenLinux, Connectiva Linux, Debian Linux, HP-UX, Slackware Linux and other. This particular worm is triggered to activate only on systems running Red Hat Linux. However, it is probable that in the future other modifications of "Ramen" will successfully operate on other Linux platforms. Therefore we recommend users to immediately install patches for these breaches regardless of the Linux distribute you use".

Info

<http://kaspersky.com>

Kompany Gold



The Kompany.com has released a GUI IDE to help KDE developers working on C++ applications.

KDE Studio Gold is a commercial release of the Kompany's Open Source KDE Studio project, with added features and full documentation. As well as standard features such as tools for code completion, dynamic syntax highlighting and popup function parameter lookup, the IDE offers simplified debugging and Kbabel translation tools. The product features integrated support for Trolltech's Qt Designer files.

KDE Studio Gold is available in either the Standard or the Professional edition, both of which can be downloaded or bought as physical media. Both editions include the same features and documentation, however the Professional Edition adds Qt, KDE, libc & kernel documentation within the help system. Prices start at around £15 for the standard edition bought as a download during the presales period. Currently the Kompany is offering the KDE PowerPlant at fifty percent off for customers who buy another product.

Info

<http://www.thekompany.com/products/ksg/>

<http://www.thekompany.com/products/powerplant>

Linuxcare



Linux and open-source professional services provider Linuxcare has unveiled its comprehensive managed services solution for Linux.

Linuxcare Managed Services are subscription-based and target the Internet service provider (ISP) market. As well as providing monitoring and systems administration, the services offer ISPs a quick way of deploying Linux-based, value-added services to their end-customers. Linuxcare Managed Services include optimisation of Internet servers, systems management, proactive remote monitoring, remote software updates and repairs across all major distributions of Linux.

Lori DeMatteis, product line director, hosting services, Digital Island, a LinuxCare



customer, comments, "Linuxcare's services and expertise have helped to maximize the reliability and performance of our Linux servers. Now, Digital Island is able to offer the same service levels agreements for Linux that we have traditionally offered to our customers on Solaris systems."

"Managed services are the logical next step for Linuxcare, and they have been part of our plan from day one," said Arthur F. Tyde III, Linuxcare co-founder and CEO. "We've assembled the best and brightest talent from the open-source community, and Linuxcare Managed Services can scale to make our services widely available to partners and end customers. We understand the need for more than basic managed services around Linux. Linuxcare is a full partner in mitigating customer risk so that they can quickly reap the dramatic rewards that open-source software affords."



Embedded servers

Coventive Technologies, which provides embedded Linux solutions for information appliances, has announced the creation of its new business unit focussed on the needs of the server appliance market. The business unit will build on the company's server appliance initiatives which were completed in last year. These include a total server appliance solution delivered to motherboard manufacturer Gigabyte. Roland Chen, formerly Coventive's director of sales, will be general manager of the Server Appliance Business Unit.

Server appliances are non-programmable, network-enabled, sealed servers, pre-configured for the needs of a specific application or to fulfil a certain function, such as that of file/print server or email server. However Coventive finds that to server appliance makers and designers are not traditionally experts

when it comes to implementing product features with embedded software. With its new business unit, the company it plans to help by providing them with its expertise in the embedded Linux field, providing open source solutions and joint engineering services to the appliance manufacturers, as well as its embedded software technology, thinnest kernel and application development and multi-lingual interfaces.

Randy Tan, chief executive of Coventive Technologies commented, "We are very excited about entering into the promising new server appliance market. The key to powering all post-PC era products, be they information appliances or server appliances, will be the embedded software, and Coventive will be at the forefront of that business, fully utilising the unique advantages of open source software."

Motorola choose CollabNet

Motorola has teamed up with CollabNet, an open source collaborative software development solution provider, to offer free web-based project hosting, a collaboration environment and code storage.

"Motorola and CollabNet are facilitating the application development process by offering a complete platform for global, collaborative development," said Bill Werner, corporate vice president of Motorola and general manager of the company's iDEN Subscriber Group. "By supporting Open Source principles, this program encourages developers to work together on projects and leverage one another's creativity, regardless of their location."

Bill Portelli, president and chief executive of CollabNet added, "Motorola turned to CollabNet for its expertise in building collaborative environments for developer communities based on Open Source principles. This is a key example of how developers can benefit from using the concepts of Open Source development."

The initiative is part of the Motorola iDEN developers support programme. The iDEN programme aims to promote the support developers working on applications for Motorola's forthcoming Java™ 2 Platform, Micro Edition (J2ME) technology-enabled multiple communications and computing handsets. The program provides them with help in building applications and getting them to market. This help includes tools, technical support, marketing, distribution, e-commerce backend processing and end user support.

Info

www.motorola.com/idendev

Embedded support

LinuxDevices.com has launched its free technical support forum for the Embedded Linux Community.

The Embedded and Real-time Linux Technical Q&A Forum is staffed by a team of volunteers from the embedded and real-time Linux companies, including Century Software, Coventive, Esfia, FSM Labs, K Computing, Lineo, LynuxWorks, MontaVista Software, OnCore Systems, Red Hat, RedSonic, and TimeSys.

LinuxDevices.com founder Rick Lehrbaum said, "Developers using Linux in embedded and real-time system applications are encouraged to submit their technical questions to our Embedded Linux Q&A Forum, where they will be promptly answered by a panel of experts. This supported technical Q&A forum is one more clear indication of the unique collaborative spirit that pervades the Embedded Linux community."

Hammer support

AMD has said it is to work with Virtutech on a software solution to support developers working on software for AMD's next-generation Hammer family of processors.

The Hammer Processors will be AMD's first 64 bit processors and will be available in the first half of 2002. AMD and Virtutech have developed a tool, codenamed "VirtuHammer", to enable software developers to write and test 64-bit programs in readiness for the launch of the processors. Using Virtutech's Simics software, a computer with a standard x86-compatible processor can simulate the operations of a 64-bit Hammer processor-based computer. This enables developers to test and debug their

64-bit software for AMD's next-generation processors using current technology.

AMD is now delivering VirtuHammer simulators to targeted software partners, to ensure they have the resources, time, and support required to develop 64-bit operating systems, tools and applications for the Hammer family of processors.

Fred Weber, vice president of Engineering for the Computation Products Group at AMD said, "Virtutech's excellent simulation technology, coupled with the powerful AMD Athlon processor, create a high-performance tool that can help developers bring 64-bit software to market supporting AMD's Hammer processors. The developer community has

expressed tremendous interest in the x86-64 instruction set and the Hammer family of processors, with more than 100,000 users having visited the x86-64.org website since the specification was released last August."

Virtutech chief executive Peter S. Magnusson said, "We're excited about adding support for the Hammer processor family to our Virtutech Simics simulation platform. AMD's x86-64 technology is a well-designed and smooth enhancement of the x86 legacy instruction set. We were able to create a prototype Hammer processor-based version of our existing x86 simulator in just a fraction of the time that adding a new 64-bit instruction set would have taken."

Real-Time tools

Real time software development solution provider Real-Time Innovations has announced the new release of its visualisation tool for monitoring and analysing embedded and real-time Linux applications. StethoScope v5.3 for Linux enables developers to watch any variable or memory location in their system while it runs. Part of RTI's ScopeTools visualisation toolkit, the StethoScope software helps speed up development cycles by enabling developers to understand and debug complex real-time code.



Stan Schneider, president and chief executive officer of RTI, says "Embedded developers face huge challenges working with systems that require small footprints, speed, reliability, and short development schedules. Proven tools like RTI's ScopeTools™ help. StethoScope, a long-time member of the ScopeTools suite, provides developers the insight they need to test, debug and improve their embedded applications. StethoScope analyses data activities on production Linux code running at full speed with virtually no impact."

Chris Conrad, principal engineer at RTI customer Veraxx Engineering, adds, "We use StethoScope to help us streamline our real-time software development process. It's been great for monitoring and analysing our system as it runs. As Linux developers, we see specialised analysis tools like StethoScope as invaluable for getting the system out on time and within specification."

Info

<http://www.rti.com>

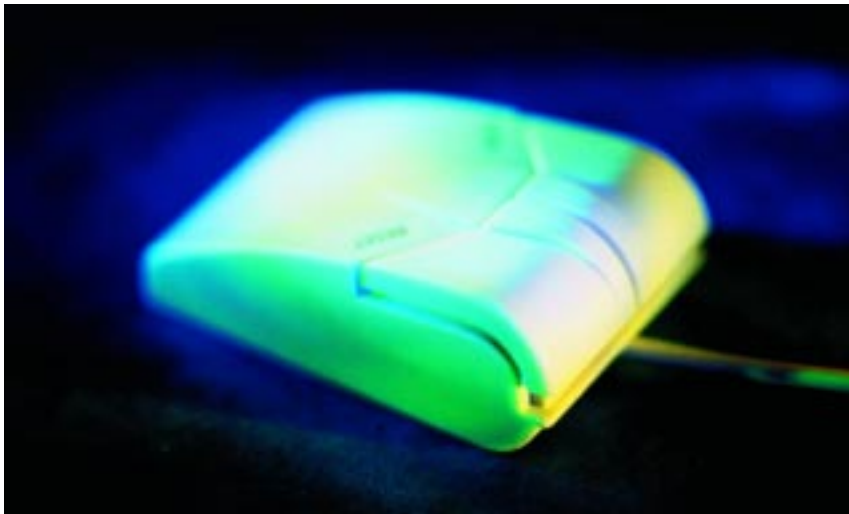
ask Neil

Crusoe Award

The Crusoe processor from mobile computing solutions developer Transmeta Corporation has been awarded the title of Best of Show at the Innovations 2001 Computer Hardware and Software category at the Consumer Electronics Show (CES) held in Las Vegas.

Transmeta introduced its software based Crusoe processor last year. It was on display at the show along with a number of new products which use it. One such product is Net Display Module the newly announced mobile computing integrated computer display from Philips Components.

Jim Chapman, senior vice president of sales and marketing at Transmeta said "This award is an acknowledgement of the innovation that Crusoe is enabling in these emerging mobile computing products." ■



Certified RAID

Networking storage technology company LAND-5 has certified Linux based PCI RAID controllers, from computer interface solutions provider ICP Vortex Corporation, for network-attached storage.

The RAID controllers use LAND-5's Linux-based iceNAS graphical software interface. From this interface, users can implement and manage up to 20TB of RAID storage. LAND-5 now plans to market the ICP RAID controllers as part of its NAS product suite.

AnnDee Johnson, ICP's vice president of marketing and sales says that ICP's relationship with LAND-5 has helped strengthen both companies' product offerings. "The combination of their advanced software and storage products with our SCSI and Fibre Channel RAID controllers offers a unique NAS solution for the enterprise market. Together, we provide affordable, scalable storage for mission-critical applications that fully leverage the strengths of Linux."

Al Kernek, vice president of marketing for LAND-5, says "ICP is one of the few RAID controller manufacturers who has excellent Linux drivers and supports integrator access to the RAID software." He adds "By mapping their extensive RAID functionality into our iceNAS software interface, we've made it easy for users to take full advantage of ICP's fast performance. Mission-critical RAID storage can be set up in just minutes."

Info

<http://www.icp-vortex.com>

<http://www.land-5.com>

Web Hosting

Global Web hosting provider Sphera Corporation has partnered with Dialtone Internet a provider of Linux dedicated hosting and co-location solutions to deliver a dedicated Linux Web hosting server line. AutoHost is targeted at Web hosting providers and runs on Sphera's HostingDirector 3.0, a software platform that aims to simplify and automate mission critical Web hosting business operations.

The solution has enabled Dialtone Internet to offer its Web hosting customers a time-saving way of automating administrative tasks such as adding sites and applications, as well as setting up web infrastructures and provision accounts.

Dialtone Internet chief executive Al Albarracin is impressed with HostingDirector as a high-end hosting solution. "It is the only product we found that allows our customers to streamline management tasks without any specialised equipment or a steep learning curve. HostingDirector dramatically enhances Web hosts'

ability to provision proven, optimized software on demand to their end-users, while controlling costs. Sphera can have a significant, positive impact on the hosting providers' bottom line."

Sphera chief executive Tamar Naor says that Dialtone Internet's customers stand to benefit from the solution. "Both Sphera and Dialtone Internet understand the challenges faced by Web hosting providers, and we've developed solutions that face them head on." He added, "Hosting Director's highly scalable architecture will give Dialtone's AutoHost customers the cost effective solution they demand for their growing businesses, making this an ideal partnership for both companies."

Info

<http://www.sphera.com>

<http://www.dialtoneinternet.net>

Python's BlackAdder

Open source and commercial Linux software producers, the Kompany.com has announced the release of BlackAdder, its Windows/Linux GUI development environment for Python.

BlackAdder features a visual design environment together with debugging, syntax highlighting and ODBC interfaces. It comes with more than 50 Mbytes of HTML documentation to provide a platform for developing Python applications. Using BlackAdder, developers can organise their Python scripts and GUI designs into projects. The development environment also features an editor that includes highlighting of Python keywords and code folding. An interactive Python interpreter (v2.0) enables developers to execute any Python commands while their applications are still running.

BlackAdder features TrollTech's Qt windowing toolkit v2.2.3 and a GUI designer offering the features of TrollTech's Qt Designer that generates Python code. The environment provides ODBC database connectivity in the form of Python's mxODBC multiplatform interfaces created by Genix.

BlackAdder is available in both Personal and Business editions. The Personal edition is targeted at home hobbyist. However both editions provide the tools to create high-quality professional applications, the restriction on the Personal edition is in the ability to develop proprietary applications for resale.

Chief executive Shawn Gordon explained, "The Python scripting language is an important enabling platform for us in all of our products. During the course of creating widget and scripting front ends for Python we realised what a great opportunity we had for taking advantage of the multi-platform nature of Python to build a comprehensive tool for creating Python-based applications." He added, "What is especially exciting for our customers is that BlackAdder not only runs on Linux and Windows, it generates applications that will run on either system as well. This protects your investment in development by enabling you to develop and deploy your applications almost anywhere." ■



G. Matter



President and Chief Executive of Linux NetworX, Glen Lowry

LifeKeeper on NetWorXs

Enterprise application reliability solutions provider SteelEye Technology has announced a strategic OEM agreement with large-scale Linux cluster systems solutions provider Linux NetworX.

Under the agreement, Linux NetworX will offer SteelEye's LifeKeeper for Linux Next Generation Enterprise Reliability platform in the solutions it provides to its e-business customers.

LifeKeeper for Linux maximises the availability of clustered Linux systems and applications by monitoring system and application health, in order to ensure clients have uninterrupted access to the data access no matter whether they exist on the corporate intranet, extranet or Internet. The solution enables lost application services to be automatically restored, either by restarting them locally or by relocating them to another server in the cluster.

Jim Fitzgerald, chief executive of SteelEye said, "Linux NetworX is one of our key OEM partners and we are very excited about the customer benefits of this alliance," "With LifeKeeper for Linux, Linux NetworX can offer customers a scalable, economical solution for protecting their business-critical environments, with assurance of global availability and support."

Glen Lowry, president and chief executive of Linux NetworX explained that the auto failover and recovery capabilities of LifeKeeper, matched Linux NetworX's customers demands for system reliability. "Linux NetworX customers demand turnkey high performance Linux clusters with unmatched system reliability - SteelEye's LifeKeeper helps us deliver highly available Internet solutions."

Info

www.linuxnetworx.com
www.steeleye.com

Evaluate and inform

UK open source services and information provider SlashTCO has announced its new partnership to deliver online and offline training in Linux application.

SlashTCO has partnered with Runaware, an evaluation service provider for both software vendors and consumers. The alliance between the two companies aims to foster awareness of the Linux operating system and offer online and offline training in Linux products. Runaware's role in the partnership will be to generate web site traffic and Professional Services customers for SlashTCO. SlashTCO, meanwhile, will provide access to Linux research, support and training materials to Runaware users. The two companies will cross-link their sites, effectively providing one-stop destinations for Linux evaluation and training.

Duane Mayes, chief executive of SlashTCO said, "Runaware's evaluation service, in combination with SlashTCO's support and training services, will allow potential customers the chance to fully discover the benefits of open source software by freeing them to find the right software application and get the support and training they need."

Rod Plummer, VP Strategic Alliances at Runaware commented, "As a full-service software evaluation marketplace. It is important for us to give the software consumer and corporate buyer the most complete information on all types of software available. With SlashTCO we will be able to present Linux products in a way that will fully educate and inform our users."

Info

<http://www.slashtco.com/>
<http://www.runaware.com/>

BriQ built

PowerPC product designer and manufacturer Total Impact has announced its new Linux-based compact Power PC based network appliance computer.

The new product is called briQ and is a customisable computing appliance designed to handle performance hungry applications. The briQ is designed to provide a versatile platform for a wide range of applications and products including firewalls, routers, security devices and web servers. It features PowerPC G3 or G4 processors. It comes with 1MB of L2 cache and a 100MHz 64 bit system bus. The briQ can support up to 512 MB of SDRAM and a hard drive with up to 40 Gigabytes of space.

The briQ measures a compact 5.74 inches wide, 1.625 inches tall and 8.9 inches deep and weighs approximately 1.85 pounds, providing developers and

OEMs with a production ready computer engine with a footprint the size of an industry standard CD ROM drive. Pricing for development systems starts at \$2,500.

Brad Nizdil, President of Total Impact believes the briQ's standard form factor will help to establish it as a computer industry standard. He expressed enthusiasm about the possibilities offered by the new device. "The PowerPC and Linux have enabled us to develop the most powerful network appliance in the smallest foot-print available. We are very excited about the briQ's potential and have already received commitments from several OEMs." ■

Info

<http://www.totalimpact.com>

WebSphere

IBM has announced a new version of its WebSphere personalisation software, which now supports Linux.

WebSphere Personalisation for Multiplatforms v3.5.2 runs on Linux, AIX, HP-UX, Solaris, Windows 2000 and Windows NT operating systems.

WebSphere can be used by businesses to create personalised marketing messages for online customers. The software can help businesses to tailor Web pages to appeal to customers and gain insight in to customer preferences.

Ed Harbour, director of marketing for the WebSphere software platform at IBM said the WebSphere software enabled customers to deploy the Web as a powerful business tool to engage customers. He added, "IBM's WebSphere Personalisation allows businesses to develop,

deploy and update personalised data quickly on various platforms, including Linux—the fastest growing operating system in the industry."

In Personalisation v3.5.2 the rules-based personalisation capabilities have been extended, enabling the personalisation strategy to be based on keystrokes made during a visitor's tour of the website. Businesses can gain insight into the visitor's interests by monitoring what site content has been viewed or what the visitor has placed in the shopping cart.

Info

<http://www.ibm.com/websphere>



Groupware Server

Open source solutions provider SuSE Linux has teamed up with Lotus to deliver the SuSE Linux Groupware Server.

SuSE Linux Groupware Server incorporates Lotus Domino version 5.0.5 on the SuSE Linux Enterprise Platform. This version of Domino supports XML, Java Servlets, Java Beans and Java APIs for accessing Domino services, enabling it to deliver the functionality of the Lotus Domino messaging and web application server for the Linux operating system. The

server offers multiple level security functions, with personalised data access based on individual and group access rights.

Other features include tools for groupware, workflow, messaging and scheduling as well as providing a platform for web and messaging application development. Message integrity is supported by S/MIME. Its visual development toolkit enables existing applications to be integrated with customer service, customer relation management, and

sales support in addition to travelling and expenses calculation.

The server comes with licences for ten Lotus Notes clients and SuSE offers sixty days of installation and configuration support.

Info

http://www.suse.de/en/produktelolution/s/groupware_server/index.html



Dolphinics