

SuSE 7.3

FIRST
LOOK

SuSE have once again produced a Linux box set with wide appeal, with its incredible range of software packages, split into two forms to give more choice.

SuSE Linux 7.3 Personal is well suited to providing the Linux newcomers with all they would need to develop a full understanding of all the advantages and benefits that a free Unix clone, such as Linux can achieve on a desktop computer. Three CD-ROMs include the latest stable operating system kernel and enough applications to dominate a computer in areas such as Office productivity, Internet connectivity, multimedia, image processing and games. The manuals have always been a real asset, well laid out, easy-to-understand and informative. The three manuals will lead the user, even one with no previous Linux experience, through the entire installation process and give them an introduction to the main desktop applications.

For one of the most complete boxed sets of Linux software, the SuSE 7.3 Professional package offers the ambitious home users and IT professionals alike a comprehensive portfolio of more than 2000 up-to-date software packages. For the installation, the user can choose between seven CD-ROMs and one DVD. The scope provides everything needed to set up intranet and Internet solutions as well as for interconnecting and protecting heterogeneous networks. Professional users are provided with all the tools required for implementing file and print

glibc 2.2.4

The new major version number reflects major changes, several years of work. 1.09.1 was a static library in the style of the 80s; the new version implements the state of the art in C library technology. It follows even the most recent standards (ISO C 99, POSIX.1c, POSIX.1j, POSIX.1d, Unix98). It is also internationalised and might have the most complete internationalisation interface known.

servers as well as WWW, proxy, mail, and news servers under Linux. The 7.3 Professional version contains five comprehensive manuals packed with the latest first-hand Linux know-how – including specific issues such as network configuration and security. Both come with SuSE **Personal Firewall**.

SuSE 7.3 offers the latest stable Linux Kernel 2.4.10 and **glibc 2.2.4**. This new kernel has improved memory management which increases performance and efficiency, most of all for server side applications.

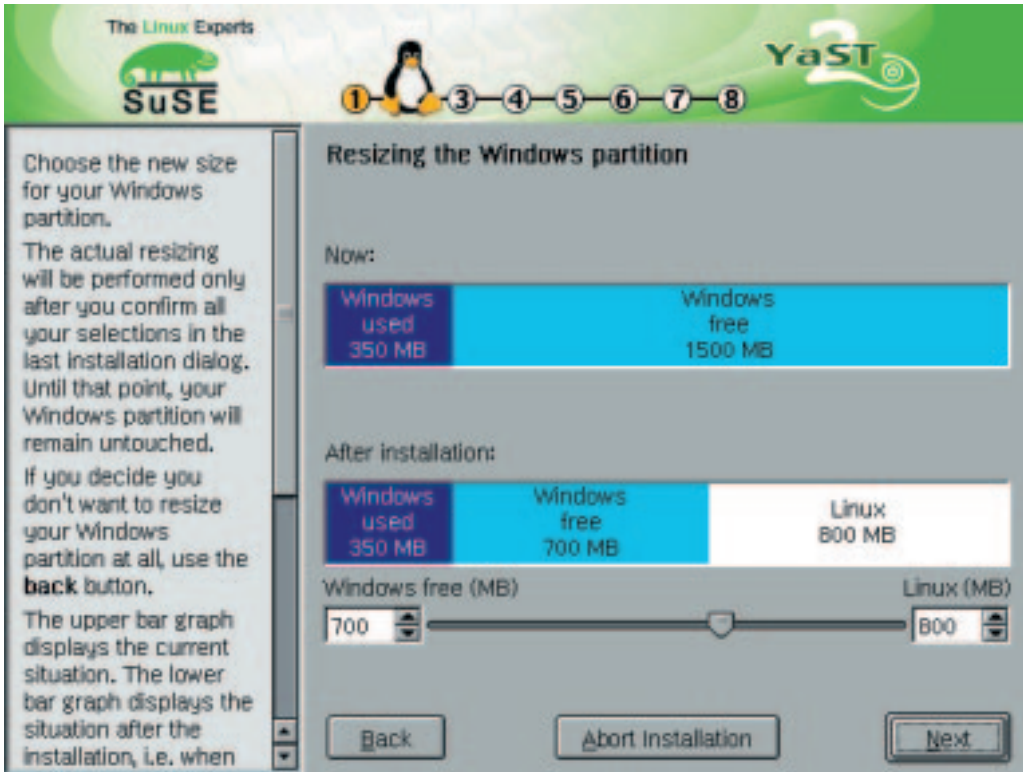
SuSE have always put much effort into their install system which serves them well for users who need some hand holding during the fretful time that an installation can be. Effort has also gone in to ensure the more experienced user can end up with the system that they want, with the choice of 'Expert Options' along the way.

As usual the Yast2 installation falls into 8 stages, with an advancing Tux penguin keeping tabs on which stage you are up to. The installation screens are always full of context sensitive helpful information, making it most unlikely that you would need to refer to the manual for guidance. Even

Personal Firewall

This effectively protects your computer against intruders. When you are online, this wall blocks everything you don't explicitly request or send. You can still view web pages, download program files via FTP, update your own web pages, and transmit e-mail. The SuSE Personal Firewall can be activated with a single mouse click.





Partitioning the hard disk with Windows

though this install system has been simple and easy to use, SuSE have been able to make some improvements in this area though.

The system of arranging for a dual boot installation of SuSE Linux together with Windows 95, 98, or ME has been substantially simplified. SuSE Linux 7.3 automatically determines free space on the hard disk and offers a suggestion for the use of this hard disk space. Should you have the need, and the knowledge, then you still have the option of 'Expert mode' will allow you partition your hard drives in whatever way you choose, giving you complete control over setting up LVM, RAID and other parameters like setting mount points and alike. **ReiserFS** now seems to be selected by default, which should allow for faster booting and less disk activity.

Software selection has also been improved. During the install you are now offered some preset installation types, available at the click of a radio

ReiserFS

This is an alternative file system to ext2fs which has been used by most distributions. Its main benefits:-

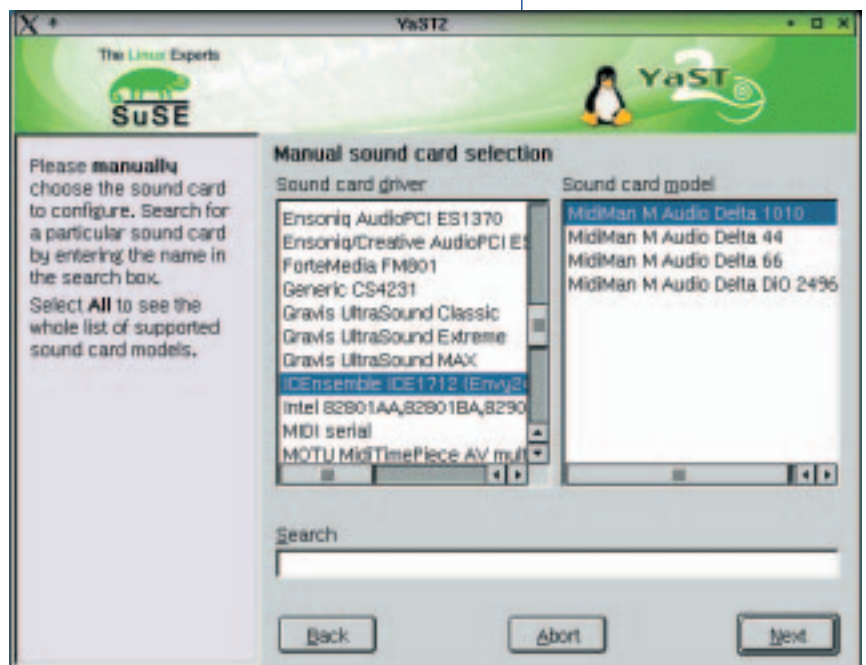
- Wastes less space: no static inode space allocation, small files packed together. Much higher performance for large directories, even compared to other balanced tree filesystems.
- Uses B* balanced trees where other balanced tree filesystem use obsolete B+ trees.

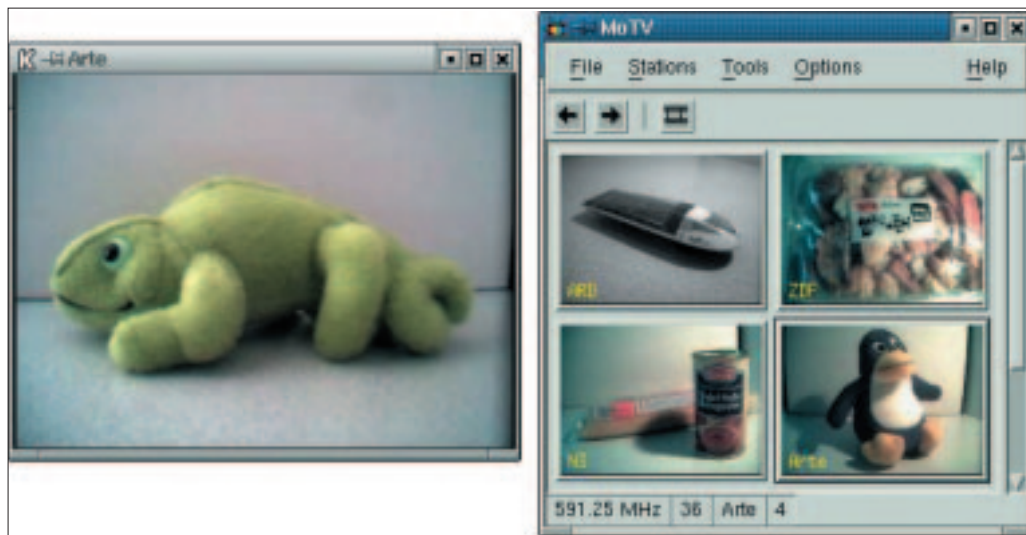
See <http://www.namesys.com/features.html> for more information.

button, ranging from minimal all the way to complete – and it could take some time to install all 2000 packages. You also get the option of detailed software selection for those people who just can't stop themselves tinkering. The 'Selecting Single Packages' option shows you all of the packages broken down by group and then allows you to make your selection from within that group. This gives you much more manageable lists to select from. You also get the chance to search for packages by name or by description.

Once you have defined the where's and what's of your installation, you are then presented with an

Sound card support





Become a TV station

'Installation Screen' to show your progress. Not only does it show you what is currently being installed, you also get to see how much time the install has left to run, as a total and on a CD by CD basis. While these times are fairly approximate, it does give you the chance to do some planning, giving you an idea as to when you will next be called upon to change the CD. Now you will know if you have time to make a cup of tea or cook lunch!

The automatic hardware detection feature has been considerably expanded and now includes even more components, with CD writers, Scanners and TV cards amongst them. This then allows the setup tool YaST2 to execute the installation and Internet hook-up almost entirely by itself.

Security is becoming more and more of an issue both at home and the office and SuSE 7.3 allows you to set up a "Personal Firewall" during your initial installation. A user-friendly graphical front end is now available for configuring the firewall, making it simple to protect your host or network against unauthorised access. As well as this, SuSE's "crypto file system" makes sure that sensitive data is secure even if the entire hardware is stolen. Stored data is only available in unencrypted form if the user has entered the correct password. Other proven security tools included in SuSE Linux 7.3 are the mail scanner AMaVIS (A Mail Virus Scanner) and PGP encryption for e-mail. Security relies on you having the latest patches available and the SuSE



SuSE desktop

YOU (YaST Online Update) facility makes it easy for you to stay up-to-date. When needed, you simply get SuSE YOU to connect to the SuSE ftp server and it will automatically download and install any of the required security updates and bug fixes available, for no extra charge.

The Linux desktop never stands still and SuSE 7.3 shows a lot of these advances, include the latest KDE, version 2.2.1, the highly functional graphical user interface, which is selected by default, as well as the most recent version of other desktop like Gnome and Enlightenment. Some of the KDE highlights include the file manager Konqueror now being set to display its file contents in a thumbnail format, which is especially useful for those dealing a lot with image and graphics archives. There is a graphical tool called Kooka which takes on the responsibility of handling the job of scanning, now making it quick and efficient. There is also the new print assistant which guides the user safely along the tricky and protocol pitfall ridden path using lpr and/or CUPS.

Linux professionals have the runlevel editor to look forward to which allows for the selective activation of server services. For the first time, the scope includes YaST2 modules for administering NIS servers as well as NIS and LDAP clients. Apart from ReiserFS, two additional journaling file systems, JFS and Ext3, can be selected.

The important stuff

The recommended retail price for:

SuSE Linux 7.3 Personal (3 CDs, 3 manuals, 60 days of installation support) is £35.

SuSE Linux 7.3 Professional (7 CDs, 1 DVD, 5 manuals, 90 days of installation support) is £59.

SuSE Linux 7.3 Professional Update, the boxed version, will be available for £35.

SuSE Linux 7.3 is available directly from SuSE Linux UK Ltd. or from bookstores and software retailers. <http://devlinux.com/namesys>

More information from <http://www.suse.de/uk/>

SuSE SUSE 7.3 LIVEEVAL

Installation Instructions for the SuSE Linux 7.3 (LiveEval version)

The LiveEval CD contains a selection of SuSE Linux software: the Linux kernel, system utilities, numerous network programs, the X Window system with the KDE graphical interface, etc.

The LiveEval is distributed without support services. The following information sources are available to you: the handbook in electronic form, the SuSE Linux Support Database, the SuSE Linux mailing lists, as well as info texts in the individual screens (see "Further information"). Since all programs can be started directly from the CD, the entire system is slower than if SuSE Linux was installed on to the hard disk and you used your own file systems. You cannot take out the CD whilst the system is running.

Requirements

You don't have to change the partitioning of your hard disk to install SuSE Linux from the LiveEval CD. Your computer should have at least a Pentium processor (or compatible), 96Mb RAM, a bootable CD Rom drive as well as a partitioned and formatted hard drive. You will need about 200mb of free space on the hard drive. Your system BIOS needs to be able to process 2.88MB boot images.

Installation.

As with any new system you are advised to back up all your data before installing so to prevent loss.

- 1 Once you have backed up your system, insert the CD and restart your computer. SuSE Linux will now be loaded. If the system fails to boot from the CD, you will need to change the boot sequence in your BIOS accordingly.
- 2 Once loaded the hardware will be detected automatically. Three files will be created on the first FAT partition (Drive C:) when you shut down the computer. These files will be `suselive usr` (the working file), `suselive swp` (a swap file for the virtual memory system) and `suselive.730` (a configuration file).

- 3 Now you can configure your system with the help of the graphical installation program YaST2. First you can set the language, keyboard layout, time zone, user and root passwords. Some time may now pass before you can launch the menu for the monitor and video card settings. This is normal. Complete this phase of the installation process once you have configured the monitor.



- 4 Apart from the automatic detection of hardware such as printers, sound cards, modems/ISDN/network, you can manually carry out other configurations.
- 5 After completing the installation process, you can log in via the KDM (KDE Display Manager) and use the programs in the graphical interface KDE (K Desktop Environment).

Starting the system with the LiveEval 7.3

Once configured the SuSE Linux can be started whenever you choose. Boot the computer with the LiveEval CD Rom and wait for the KDM login screen to appear.

Caution

Never just switch the computer off! You have to shut it down properly. End the KDE session with "logout" and then, in the KDM screen, with "Exit". If you want to remove the LiveEval system completely from your computer, simply delete the "suselive.*" files you created. (See point 2 of the Installation instructions above).

Further Information

README file on the LiveEval CD Rom

SuSE Linux mailing lists:

<http://www.suse.de/en/support/maillinglists/>

For any technical issues, please refer to the SuSE Linux Support Database:
<http://sdb.suse.de/sdb/en/html/index.html>