

K-splitter POT-POURRI

Who says there's no place for gossip and scandal in a Linux magazine? K-splitter broadcasts news from the K-world and noses around here and there behind the scenes.

The new season holds many a surprise for all KDE-ers and Stefanie Teufel is at hand to introduce them all

Grumble corner

If you've ever wanted to get rid of an annoying element in a KDE application, or know how your favourite tool could be made even more useful, you'll now get the ultimate chance thanks to the revived KDE Usability Study.

The makers of the KDE project are collecting user reports at their Web site: <http://usability.kde.org/>, which highlight weak points or especially successful features of diverse KDE programs. There are already some evaluations on the site of consoles, Kicker, Quanta and the Konqueror.

Anyone wanting to contribute their views on greater user-friendliness at KDE should not delay. Head straight to <http://mail.kde.org/mailman/listinfo/>



Join up now – your usability study needs you

kde-usability/ and join the project's mailing list. Alternatively, the makers will also be glad to receive new reports of your experiences. The usability lists can be found at <http://usability.kde.org/reports/maintainerlist.phtml>.

This season's fashions

The latest in chic for your KDE desktop is presented to you this season by Kristof Borrey. Instead of simply clicking together another KDE theme, he has a whole collection of bright, shiny, colourful icons waiting for you. Anyone wanting to give their desktop and Konqueror a whole new look can obtain the package `Kicons_0.2.1.tar.gz` from

<http://prdownloads.sourceforge.net/ktemplate/>.

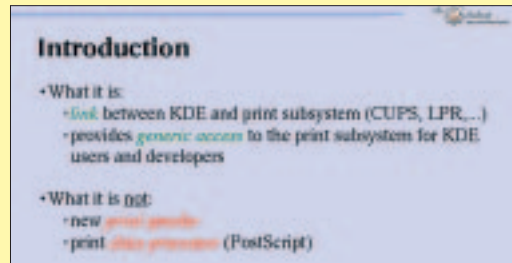
Open the control centre and select Design/Symbols. Then click on the folder icon and in the file browser which then appears select `Kicons_0.2.1.tar.gz`. All you have to do now is press OK and click on Install New Design. Select the new entry `Kicons` in the Design tab to view the works of art, as in Figure 1.



Figure 1: Your country needs new icons

Black on white

All those who were unable to attend the LinuxTag live, now have the option of viewing an HTML version of Michael Goffioul's talk on the new KDE print system at <http://users.swing.be/kdeprint/www/index.html>. As chief developer of this system, which is being made accessible to a broad range of users for the first time in the newly published KDE Version 2.2, Goffioul has a thing or two to say about the new technology. Further information, including additional screenshots and photos, can be obtained from the KDE Print Web site at <http://users.swing.be/kdeprint/>. The author is



If you missed the real thing round check out the website

also seeking support for the documentation of the individual components and will be glad to receive any offers.

Finding room

No matter how big your screen may be, once you've opened a couple of windows the desktop will already look much too small. With the increasing multiplicity of applications space is also getting tighter in the KDE Panel.

Thankfully, the same thing happens to Karl-Heinz Zimmer, which is why he's thought up a little trick for using dial-in connection and ISDN to get on the Internet, without all that tedious messing about with the mouse or having to burn up valuable space with the status indicator. You can now dial in at the press of a key, and the ISDN status indicator is replaced by a coloured panel.

To do this, download the script created by Karl-Heinz Zimmer (http://bugcops.org/downloads/isdn_on_off) and the background image (http://bugcops.org/downloads/Panel_Online_Background.png) onto your computer. Then copy the file `isdn_on_off` into the directory `/usr/local/bin` or wherever else you store your treasures like this. As root, ensure that the script can be executed globally:

```
chmod a+x /usr/local/bin/isdn_on_off
```

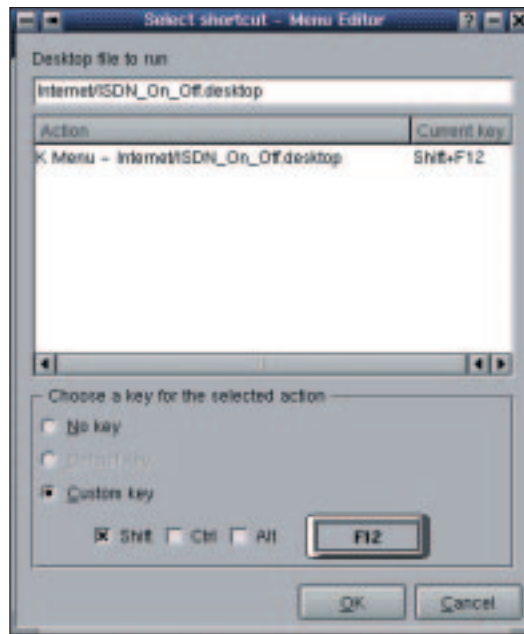
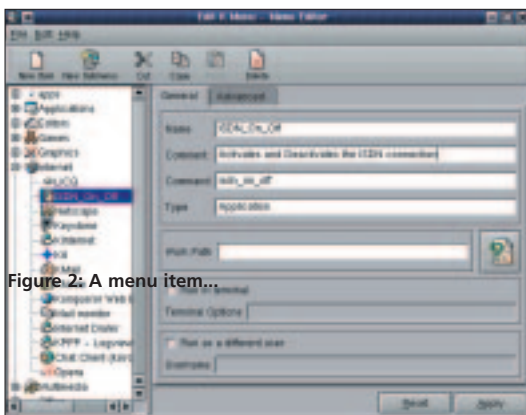


Figure 3: ... and a shortcut key for getting on the Net

For safety's sake, take this opportunity to check whether, as user, you have execution rights on `/usr/sbin/isdnctrl`. If not, correct this. Start KDE's menu editor in the K menu, under Install Control Bar/ Menu Editor and make a new entry under Internet. Enter the following values here: In the General tab an `ISDN_On_Off` is on offer by name. For a comment, add something like Activate and Deactivate the ISDN connection. If you're happy to do without a comment, you can always leave the box empty. For command, enter `isdn_on_off` (Figure 2).

Now switch to the Extended tab, where you should click on the Change button. In the dialog box, which will then appear (Figure 3), set the key combination to `Shift+F12`. Now when you press `Shift+F12` together you can get onto the Network of Networks and, after glancing at your latest telephone bill, you can hang up again in the same way. ■

For safety's sake, take this opportunity to check whether, as user, you have execution rights