

Product Reviews

We take a look at the latest products to hit the office. These are designed to make your life easier and more fun. **BY JOHN SOUTHERN**

Flip2Disk

This is a handy sized portable hard drive. Having a capacity of 40GB it allows you to carry serious data around in a convenient form.



Just fitting into a shirt pocket though more easily carried in its little carry case the Flip2Disk has at its heart a 2.5" hard disk. The model supplied was a Fujitsu 40GB. To save on broken drives this is then encased in a "Shoc-Bloc". The Shoc-Bloc consists of a rubberised protective wrapper holding the drive inside a toughened plastic

outer case. It is quoted as being able to survive a 2 meter drop and we can verify a 1 metre drop as we knocked it off the desk onto a tiled floor by accident.

The Flip2Disk is connected via a choice of cables ranging from Parallel port to USB 2 and PCMCIA. Software is supplied for other Operating Systems but under Linux via the USB it acts as a SCSI hard drive.

The most obvious uses are to be able to carry data to a client's machine or as a disaster recovery device. In the office we found it useful to move video files about without tying up the network. The flipdisk PCMCIA converter is probably the most useful allowing you to connect easily to a laptop.

We were a little disappointed that although buried on Amacom's website it mentions Linux compatibility it was not quoted on the box. The other drawback was price. A 40GB 2.5" drive can be had for just over £100 so the extra £250 for a rubber and plastic housing does seem quite expensive.

Flip2Disk

Amacom Technologies Limited
40GB £385 20GB £195
30GB £289 10GB £159
<http://www.amacom-tech.com>

BRU-Pro version 2.0

BRU-Pro is aimed at being a robust and easy to use backup solution with native SCSI tape drive support. Installation was via an install script rather than from source or RPM. Although the installation ran smoothly the Administrator's Guide explains potential problems such as not being able to execute programs from an auto-mounted CD.

After installing the tape server, client and control console you then have to install the agent software on any other client systems that you are

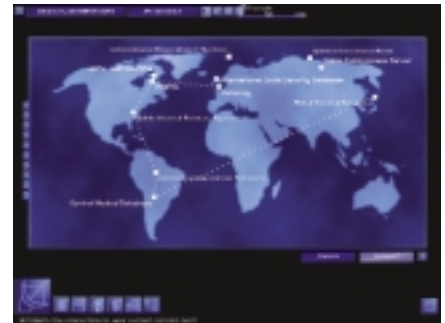


going to backup. This has the option of using network compression and encryption if your processor can handle the loading. Ports through firewalls are in the range 6661 to 6664.

The GUI started with *xbrup* is password protected. You can also run the software from a console. The system will scan a range of IP addresses to locate clients which can be on other OSes if needed with the exception of Novell Netware. Capable of full or incremental backups the GUI was simple to

Uplink

It is hard to summarize this game without just filling the page with adjectives such as twisted, great, unique, fun, warped, wonderful, dangerous and above all compulsive. Set in the near future you play the part of a high tech



computer criminal. Through a series of challenges you learn how to break into computers over networks. How to earn money selling other people's stolen information. Learn how to hide from all others and how to trust no one. A demo version is available to download. My advice is don't because you **NEED** to buy this now. I can see my whole waking life taken up with this game, and I am deliriously happy about it.

Uplink

Introversion Software
£19.99
Bonus disc £5
<http://www.introversion.co.uk>

operate and control. Jobs could be batched and scheduled with ease.

Autobalancing is used on multiple drive systems where the least utilized drive is chosen for the next operation. Restore is simple giving the options of overwriting or not and to which destination. Overall a well thought out product, ideal for the small business.

BRU-Pro 2.0

Tolis Group Inc.
Server plus three clients US \$999
Additional clients US \$99
Personal Edition US \$59
<http://www.tolisgroup.com/bru-pro3.html>