

# Software News

## ■ KDevelop

The KDevelop team has announced the third and final alpha release of KDevelop 3.0. Sources can be downloaded and binary packages will be available soon.

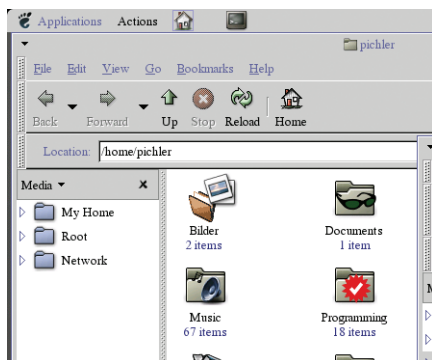
Since the previous alpha release almost all known crashes have been eliminated, many bugs have been fixed and an integrated valgrind part has been added. All users of earlier versions of Gideon are encouraged to upgrade, and KDevelop 2.1 users are also encouraged to try Gideon out. ■

<http://www.kdevelop.org>

## ■ Multi-rooted Nautilus

Wolfgang Pichler has been working on a new multi-rooted tree view for Nautilus. He has released the code to try out. ■

<http://www.dialog-online.at/pichler/media.tgz>



## ■ Scriptable apps

Trolltech, has released the beta version of Qt Script for Applications (QSA). QSA is Trolltech's new multiplatform scripting toolkit for Qt-based application developers.

Qt Script for Applications lets developers and end-users extend and customize Qt applications through an ECMA standard scripting environment. As the scripting libraries are integrated most Qt applications are inherently scriptable. Applications do not need to be re-written to implement this functionality.

## ■ Free Light backup

Arkeia Corporation has released Arkeia Light, a fully enabled free version of the company's Arkeia V5 enterprise software for open source environments.

Arkeia Light is designed to provide Linux-based PCs and small networks with enterprise-calibre backup capability at no cost for personal or commercial use.

Arkeia is the most widely used professional backup solution in the Linux environment with more than 90,000 networks world-wide protected by either the Light or the full version.

This new version of Arkeia Light features the Arkeia V5 user interface, including a calendar interface for periodic backup and exception management. Arkeia Light adds support for OpenBSD and NetBSD clients and many new Linux distributions, including the recently announced UnitedLinux.

Arkeia Light is a complete version of the Arkeia solution (without any time limit) for 1 Linux backup server attached to a SCSI single-tape drive and 2 desktop-class client machines (i.e. Linux, FreeBSD, BSD/OS, OpenBSD, NetBSD and/or a Microsoft Windows workstation – Apple MacOS X support is scheduled for quarter 1-2 of 2003). ■

<http://www.arkeia.com/arkeialight.html>

QSA features the QSA library, Qt Script and Qt Scripiter. Qt Script is based on ECMAScript, which is also the foundation of JavaScript. Qt Scripiter is an Integrated Development Environment (IDE) that can be deployed on a royalty-free basis with QSA-enabled Qt applications. End users and VARs (Value Added Resellers) can use Qt Scripiter to visually design custom forms, and to write, run and debug forms and Qt Script code in script-enabled applications.

C++ developers can create a script-enabled Qt application by specifying

## ■ Celestia released

Celestia is a free real-time space simulation that lets you experience our



universe in three dimensions. It lets you travel not only around the surface of the Earth but throughout the solar system, to any of over 100,000 stars, or even beyond the galaxy.

Celestia features seamless travel with an exponential zoom feature which lets you explore space across a huge range of scales, from galaxy clusters down to spacecraft only a few meters across. It has a 'point-and-goto' interface which makes it simple to navigate through the universe to the object you want to visit and a scripting interface. ■

<http://www.shatters.net/celestia/>

## ■ Anjuta 1.0.0.

Heard of Anjuta? It's the IDE for the GNOME 1.x platform, initiated by Naba Kumar and named after his girlfriend. Recently, he announced a latest stable version – nicknamed Diwali, after the popular Indian festival of lights. ■

<http://www.anjuta.org/>

which features should be scriptable. The script-enabled application may then be distributed, including QSA libraries, and the Qt Scripiter.

The system utilizes the same 'Signals and Slots' mechanism as Qt. QSA has not had its pricing set yet.

QSA will be released under a commercial license for Linux/Unix (X11), Windows and Mac platforms. QSA will be released under the GPL for free software development on the Linux/Unix (X11) platforms. ■

<http://www.trolltech.com>

## ■ Better graphics

nVidia Corporation has announced a series of new corporate initiatives that will extend the company's position in the Linux market.

As part of their commitment to the Linux community, they revealed details of a technical support program for end users and professional customers: a new software driver package that includes performance enhancements and new features for nVidia's advanced graphics features, including nVidia's CineFX architecture delivered by nVidia's Unified Driver Architecture (UDA), and support for the latest PC technologies, including AGP 8X and OpenGL 1.4.

All nVidia products, including the GeForce, GeForce Go, and NVIDIA Quadro family of graphics solutions, as well as the nVidia nForce platform processors, have been fully optimised for the Linux operating system for all major PC platforms, including those based on the Intel Pentium, Intel Itanium, and AMD Athlon CPUs.

The software release also marks the first time a graphics manufacturer has publicly released Linux drivers for AMD's upcoming Hammer platform, providing developers and OEMs an early ability to take advantage of AMD's Athlon 64 processors before they are officially released to the market.

With nVidia's latest software release, users of nVidia Quadro-based graphics solutions can look forward to performance improvements by up to 30%, compared to previous driver versions.

Additionally, professional users will appreciate the performance parity on Linux versus traditional operating systems, support for multi-monitor configurations and certifications for Maya and Softimage|XSI, Shake, oil industry visual interpretive technologies and other applications used in today's post production, special effects houses and other professional markets. ■

<http://www.nvidia.co.uk>

## ■ ACME 2.0 released

ACME is a small GNOME tool to make use of the multimedia buttons present on most laptops and internet keyboards: Volume, Brightness, Power, Eject, My Home, Search, E-Mail, Sleep, Screensaver, Finance, WWW, Calculator, Record, Close Window, Shade Window, Play, Stop, Pause, Previous, Next, Groups, Media, Refresh and Help buttons.

ACME works on all the platforms GNOME supports (laptops and PCs). It uses either OSS or ALSA for Volume control.

Adding other sound backend is pretty easy but for those that are not so sure, an invite, to contact the author, has been sent out to anyone in difficulty, especially if you have access to other hardware/platforms where ACME doesn't work. ■

<http://www.hadess.net/misc-code.php3>

## SuSE Linux Business Solutions

# A PERFECT FIT!



THE UNITED POWER OF LINUX

## SUSE LINUX ENTERPRISE SERVER 8

The complete server operating system for use in mixed IT environments in all types and sizes of companies.

### Utilization:

The Enterprise Server 8 is designed as a powerful, scalable and secure Linux solution for business. It enables the implementation of virtually any server service in a company, including file and print servers, web and security solutions, as well as application and middleware servers such as databases, ERP, and storage. It allows a truly modular approach for a more flexible setup.

### Benefits:

SuSE Linux Enterprise Server 8 is based on the UnitedLinux standard, with extended maintenance support, providing a high degree of investment security, stability, and reliability. Moreover, the system yields very considerable savings compared to alternative server software, making it the perfect platform for consolidating heterogeneous server structures and significantly reduces system administration costs.

### Comprehensive Maintenance Programme:

Availability of full maintenance and support services. Access to updates and upgrades. Plus: optional training/support add-ons and individual service-level agreements.

### Multiple Hardware platforms:

The server software runs on AMD/Intel 32-bit and 64-bit processors as well as on the entire IBM eServer series. On the client side, the server can easily interact with all common operating systems and hardware platforms. Versions are built upon the same code base and offer the same functionality and tools across the entire range of platforms.

UNITED **LINUX**

SuSE manages an active VAR programme and welcomes inquiries from channel partners.

Please contact your SuSE team for any of the following information:

1. Product information brochure
2. Technical datasheet and whitepapers
3. TCO analysis of Robert Frances Group
4. Information on the new SuSE Linux Openexchange Server 4 with groupware and calendaring functionality.

Call us now for the latest Seasons Special offer!

SuSE Linux Ltd.

Appleton House · Hammersmith · London W6 9JG  
Tel: 020 8846 3918 · Fax: 020 8748 0538  
sales@suse.co.uk · www.suse.co.uk

