

**NEWS**

**Software** ..... 6

**Business** ..... 10

**World** ..... 12  
Get that international feeling with Linux World News.

**Insecurity** ..... 14

**Kernel** ..... 16

**Letters** ..... 18

**COVER STORY**

**Linux Office Intro** ..... 19

**ThinkFree Office** ..... 20  
A Java-based Office application suite.

**TextMaker** ..... 24  
Lightweight, superfast word processing with all the features.

**OpenOffice Templates** ..... 26

**OpenOffice Converters** ..... 28  
The easy way to get useful data out of proprietary formats.

**OpenOffice Basic** ..... 32  
Import and modify macro functions, the easy way to make OpenOffice more efficient.

**Desktop Distributions** ..... 35  
Comparing Linux distributions that are specifically designed for desktop use.

**REVIEWS**

**Wireless LAN hardware** ..... 40

**LPI Certification** ..... 44  
What the LPI stands for and what happens on a professional training course.

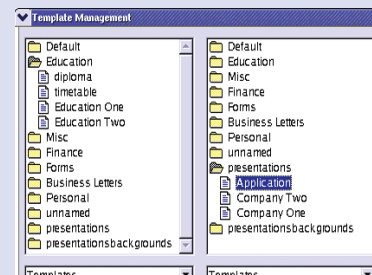
**KNOW HOW**

**CPU Monitoring** ..... 46

**QMail** ..... 50  
How to install and setup a QMail mail server giving uncluttered, easy to follow configuration files.

**26 OpenOffice Templates**

Stylesheets can save you lots of time when working with OpenOffice if you are manipulating large documents or performing repetitive tasks. So, how do you create useful templates for letters or memos quickly? We explore the finer points of creating the master templates that prove to be so useful in everyday operations.



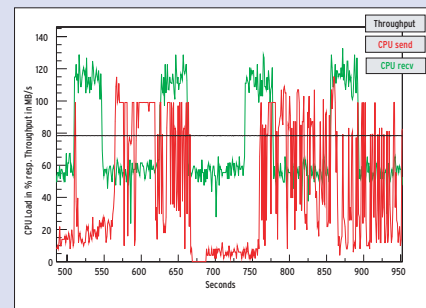
**40 Wireless LAN hardware**

Setting up a wireless LAN need not be a difficult or daunting task. The hardware that is discussed in this review was chosen because it promises easy Linux installation and integration into your current network. Standard devices and options were chosen making it easy for you to do yourself.

**46 CPU Monitoring**

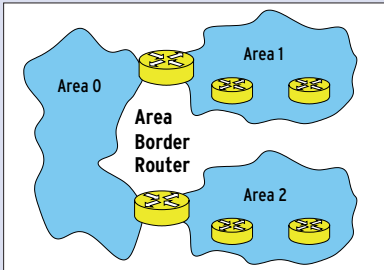
Most CPU load monitors, such as *top* and *xosview* access the Linux kernel's */proc* filesystem to try and determine the correct load.

However, this interface can deliver incorrect values under certain conditions. We explain why this occurs and the patch described in this article helps resolve this issue, ensuring the program's processes no longer remain invisible to the kernel and so escape monitoring.



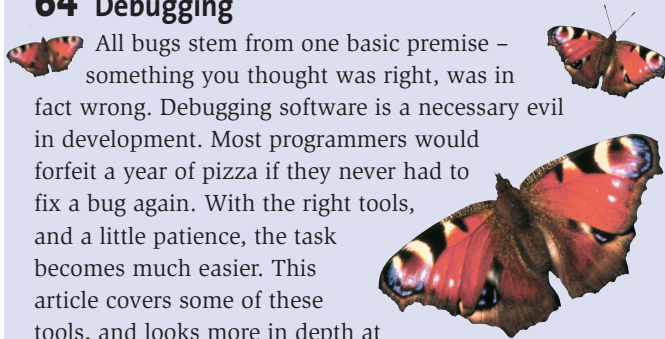
## 56 Zebra

In a network with multiple paths to a target, dynamic routing decides the path that an IP packet will take. Sophisticated protocols assess the quality of a connection and then make routing decisions based on this knowledge. The Zebra routing software implements multiple routing protocols. Zebra is a recent and promising GNU project.



## 64 Debugging

All bugs stem from one basic premise – something you thought was right, was in fact wrong. Debugging software is a necessary evil in development. Most programmers would forfeit a year of pizza if they never had to fix a bug again. With the right tools, and a little patience, the task becomes much easier. This article covers some of these tools, and looks more in depth at the practices involved with one of the most prominent, gdb.



## 87 CeBIT 2003

A report from the world's largest computer fair, with over half a million visitors this year. Especially the LinuxPark area became a little cramped at times. These eight days saw continuous Linux and Open Source lectures including Apache Web Server Security Secrets. The Open Booth displayed three or four different projects a day and Knoppix discs were widely sought.



### SYSADMIN

Charly's column ..... 55  
 Zebra ..... 56

### PROGRAMMING

Debugging ..... 64  
 MPI Cluster Programming ..... 70  
 An easy guide to programming computer clusters with the message passing interface.

### LINUX USER

KTools: Plug-ins & Applets ..... 76  
 The best KDE panel applets around.  
 DeskTOPIa: BubbleMon & WMFishTime ..... 78  
 DockApps for you system information made fun.  
 Out of the Box: ToDo Manager ..... 80  
 Do not forget to read this article.  
 System time with NTP ..... 82  
 Maintain your system clock with an NTP server.  
 Environmental Variables ..... 84  
 Control the important elements from the command line.

### COMMUNITY

Audio Developers Conference ..... 86  
 A report on the first international meeting for audiophiles.  
 CeBIT 2003 ..... 87  
 Inside dot org: Rule ..... 88  
 How to run up-to-date Linux on all hardware.  
 Open Source Software Projects ..... 91  
 The User Group Pages ..... 94

### SERVICE

Events / Advertiser Index / Call for Papers ..... 96  
 Subscription CD ..... 97  
 Next Month / Contact Info ..... 98