

Business News

■ Fujitsu forging bonds with Red Hat and Borland

Global partnerships are flourishing. Fujitsu, and subsidiaries like Fujitsu Siemens Computers, now have a deal in place with Red Hat to work more closely together to technically enhance and market the Red Hat Enterprise solutions for those customers running mission-critical applications on Fujitsu's Intel-based servers powered by Intel Xeon and Itanium processors. This goes on to strengthen previous agreements, with Red Hat solutions being offered on Primergy servers since March 2001.

The parties will collaborate in software development, marketing, sales, delivery, and support efforts to optimize Red Hat Enterprise Linux for mission-critical use on Fujitsu hardware. Fujitsu also plans to work to ensure that all its enterprise applications are compatible with the Red Hat Enterprise Linux platform, so that customers will have the benefit of running a

fully integrated solution from Red Hat and Fujitsu. Leveraging its expanded collaboration with Red Hat, Fujitsu plans to



make enhanced Red Hat Enterprise Linux solutions available on its high-end Intel Xeon and Itanium processor family-based Linux servers currently under development.

This in turn makes the Linux bed more comfortable for ongoing Oracle development with the close relationship already established with the work done by Fujitsu to promote the Oracle9i Real Application Clusters.

Not to be left out of the chain, it's now Borland's turn to sign with Fujitsu. The aim of the agreement is to jointly deliver a value-added solution designed to help companies develop and deploy Java™ 2 Enterprise Edition (J2EETM) applications faster on Fujitsu's Interstage Application Server, using Borland development solutions for Java. Fujitsu will provide the value-added solution (available in both English and Japanese) through distributors to its worldwide customers.

It will be interesting to see how these ties work with each other. ■

<http://www.fujitsu.com/>

■ Linux helps keep the traffic moving

Linux has found its way into the very heart of traffic management systems throughout Europe thanks to Peek Traffic Inc. choosing to put MontaVista Linux Professional Edition in to their EC-1 Traffic Signal Controller, which has the function of controlling intersection traffic based on traffic load. It is able to manage 40 signal groups and 128 loop detectors at one time.

Peek Traffic had previously found that their earlier choice of operating system proved to be far too inflexible, which led to much longer development cycles, which, in turn, led to higher costs. They

have also been able to standardize their development of other systems, like the TrafficBox roadside motorway unit which displays emergency information in a portable form.

Running on Motorola PowerPC boards, Peek Traffic now feels sure they can rely on a standards-based open architecture OS giving their worldwide customers better options for their equipment operating in different environments and which have quite different functional requirements. ■

<http://www.peekglobal.com/>

<http://www.mvista.com/>

■ R&D to protect your data

The ever increasing growth in data management is leading to an increased need in security and fault protection. Cyclades has been offering data center fault management since 1991, with links to the Linux community going back to 1993.

Cyclades now sees the time as being right to increase their Research & Development facilities, expanding their existing efforts in both the United States and in Brazil while opening new facilities in Erding in Germany and Westlake in Australia.

The German site will primarily be set up to ensure that the Cyclades Advance Console Servers support GSM standards, enabling a wireless dial-up connection between the equipment and a customer's wireless modem to provide 'out-of-band' management systems to enable remote access and control of network nodes via a console port.

Unlike other products designed with proprietary software technologies, Cyclades products feature Open Source software. Benefits include stability along with flexibility for customization and additional functionality that can be incorporated by the end user or system integrator.

Westlake has been charged with the responsibility to customize the Cyclades TS2000 terminal server to be compatible with the special IP address assignment requirements of a particular customer, making installation and maintenance easier for technicians.

The R&D facilities in Fremont, California and Sao Paulo, Brazil are creating new products and enhancing existing ones for the European market. For example, the recently introduced AlterPath PM8, an Intelligent Power Distribution Unit that enables remote power control of servers and network gear, is being customized for the European market to meet the technical requirements for input voltage, maximum current and outlet type. When used in conjunction with Cyclades console servers, the AlterPat PM8 delivers easier management capabilities and faster problem solving by integrating console access and power control into one single interface. ■

<http://www.cyclades.com>

■ Itanium 2 zips along with SGI Altix

Yes, it's another processor benchmark. Here we have some preliminary results of 64-bit application tests reveal that the SGI Altix 3000 family running on Madison, that's Intel's codename for the Itanium 2, will provide another leap in performance while maintaining the price/performance balance and retaining the scalability that can be taken advantage of from a standard Linux environment.

Running 'real-world' applications, like computational fluid dynamics, to form the basis of their benchmark tests, SGI has confirmed that there will be a more than double speed boost when compared to any comparable system used today.

The tests were conducted on an SGI Altix system running four 1.5 GHz Madison processors and were shown to outpace the industry's current competitor, an IBM eServer pSeries, running four POWER4 processors. SGI doesn't see the

due release of the new POWER4+ processors as effecting this outcome by much.

Once the Madison processors start to ship in some volume then SGI will be able to test the system to a much greater depth. Showing how far the speed leap can reach will prove interesting once SGI is able to test the Altix 3000 in its 64 processor configuration, something which is unique to SGI. ■

<http://www.sgi.com/servers/altix/>



■ Oracle Clusters

Running on industry standard HP ProLiant servers with SuSE Enterprise Server 8, Hewlett-Packard has now achieved an industry first in clustering the Oracle Applications Standard Benchmark. This type of clustering solution offers improved scalability and performance for the Oracle E-Business Suite. It is also at a much lower price point to boot.

Testing for the first clustered Linux OASB benchmark was conducted on Oracle E-Business Suite version 11.5.6 and Oracle 9i Database with Real Application Clusters v9.2.0.1. This testing model achieved the highest performance results of 6,832 concurrent users and an average response time of 1.24 seconds. The hardware used was a 2-node second-generation HP ProLiant DL580 cluster and the operating system used in the test was SuSE Linux Enterprise Server 8, powered by UnitedLinux. ■

<http://www.hp.com/linux/>

http://www.oracle.com/apps_benchmark/html/

■ Open Source to see off Open sores

Another indicator that Open Source initiatives are beginning to capture a broader sweep of the marketplace. Trustix, in partnership with IBM has been chosen to supply a Linux based e-mail solution to the Royal College of General Practitioners throughout the United Kingdom, some 6,000 practices in total.

Ee-scape, the Cambridge, UK, based reseller of this system will also allow the RCGP to provide new services in the future, including the web enabling of some of the Royal College's Quality initiatives.

The RCGP's mail network needed the extra support from IBM. While the RCGP had already evaluated some of the Linux-based solutions they were not completely convinced that they would scale appropriately, even

■ UKFSN to offer ADSL

Especially for the conscientious Linux user, but not limited to, the UK Free Software Network, UKFSN is now able to offer both consumers and business users broadband connectivity.

Download speeds start at 512KB/s and rise on upwards to 2048KB/s. So that you can take full advantage of the service, UKFSN has arranged that you get not just one fixed IP address, but four, for the consumer service and 16 static addresses for business customers.

Contention ratios are as you would expect them, with just 50:1 for consumers and down to 20:1 for businesses.

The service is a wires only service, enabling you to buy the best ADSL router for your needs.

This is an extra special offer though because the UK Free Software Network donates all of its profits raised on their services back into UK Free Software projects.

Prices start from £29.99, with a special discount available for those joining up in July. ■

<http://www.ukfsn.org/>

though these Linux solutions were already better than some of the existing proprietary solutions that the RCGP had in place.

Ee-scape suggested a solution based on using Trustix web and e-mail servers running on an IBM xSeries server. The RCGP tested two Linux-based solutions for a four week period before it finally decided on the Trustix solution.

This worked well and had the additional benefit of showing that the Trustix mail and web server applications could run

without causing problems for other applications running on the same xSeries IBM hardware. ■

<http://www.ee-scape.net/>

<http://www.trustix.com/>



Linux-powered telephones

The new Motorola A760 mobile phone is not only Linux driven, running the phone's elaborate color screen and built in digital camera, MP3 and video players and controlling the running of any Java programs you care to throw at it, it also comes with the Extended Systems desktop data synchronization software. This is the same software that is currently bundled with phones from three of the top five manufacturers, including Siemens and Sony Ericsson.

Motorola's new A760, scheduled to go on sale in Asia in the third quarter of this year, with availability in North America and Europe to follow, will ship with Extended Systems' XTNDConnect PC. Extended Systems' certified SyncML translator technology will be leveraged to synchronize PIM (personal information management) data between the desktop and the A760.



<http://www.extendedsystems.com/>

Processor wars

Benchmark tests can be misleading, if read on their own. Having someone to give an independent overview goes some way to giving a clearer picture. This is what SPEC, the Standard Performance Evaluation Corp has done in validating their previous claim that the AMD Opteron processor was the highest performing processor in its class when used for 2P and 4P server installations.

In a breakdown of some of the 57 key indicators it was shown that the Opteron lead in several categories including :

- Highest recorded 2P and 4P SPECweb(r) 99 scores, breaking for the first time the 10,000 barrier on a 4P system
- Highest recorded 2P and 4P SPECint(r)_rate2000 scores
- Best scaling 1P to 2P to 4P SPECfp(r)_rate2000 scores
- Highest recorded 4P SPECweb 99_SSL scores
- Highest recorded 1P, 2P, and 4P SPECjbb(r) 2000 scores

SPEC is a non-profit organization that oversees benchmarks that measure the performance of high-performance computers.

<http://www.spec.org/>
<http://www.amd.com/>

Certification – more money

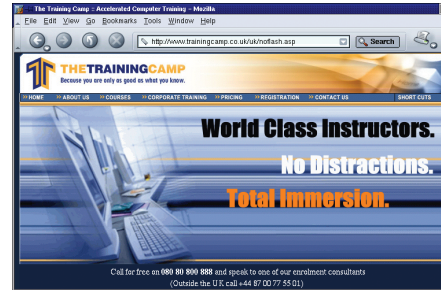
Having the piece of paper does seem to give you more of a bargaining tool when discussing salaries with your employer. The real step comes in when you have two or three certificates and it was shown recently that sys admins lucky enough to be in this position were, on average 7% better off because of it.

With this fact now laid bare, The Training Camp UK has made it easier for IT professionals to double their skills and increase their salary opportunities within only 7 days by creating dual certification courses.

The interesting development here will be the CompTIA Linux + course which can now be combined with the Linux LPI course at the same time.

Sitting both courses will save you that most precious resource, time.

<http://www.thetrainingcamp.co.uk/>



Banks, Stock Exchanges move to Linux

Currently financial institutions are rapidly moving towards Linux, attacking the leading position of Sun Microsystems in the line-of-business and marking a change in thinking in the once so conservative market. Early signals started last year when larger banks like Goldman-Sachs, Merrill Lynch announced that they embraced the Penguin. According to Red Hat there isn't a single bank that is currently not considering to move to Linux and IBM currently backs that statement with the announcement that Dresdner Bank is also moving.

Not only banks are moving - Euronext, the recently merged Paris, Brussels and Amsterdam stock exchanges,

also decided to use Linux on the servers in the back office. The change was needed, due to a steep increase in data volumes over the last couple of years.

Moving to Linux meant a cost reduction

of nearly 80 percent, while all business demands were met. The choice wasn't made out of political reasons, but was purely based on technical demands. For the actual transactions and direct

administrative processes Euronext will not change from Tandem computers for the time being.

Euronext bought 23 dual-CPU HP systems with Intel CPUs, to take some of the load off their Tandem servers and IBM H80 servers. The machines will run Oracle 9i RAC and will be used for quotes and other applications which put a hefty load on the processor and generate lots of data traffic.

<http://www.hp.com/>
<http://www.euronext.com/en/>

