

NEWS

Software 6

Business 8

World 12

Insecurity 14

Kernel 16

Letters 18

COVER STORY

Movies at Home Intro 19

Video Overview 20

Kino 23

Kino is a small, easy-to-use video editing program for digital movies. We give you a simple tutorial on how to make the next blockbuster from your digital camera.

Xawtv 26

Make the most of a TV capture card with the Xawtv suite.

Fanless Video Recorder 30

This article describes the hardware required to build a silent Linux video recorder.

REVIEWS

Book Reviews 32

Read about the secrets of computer espionage and hacking Google. Find out how to make a development platform.

SuSE Linux Desktop 34

Take a look at the new SuSE Linux Office Desktop and see what it has to offer.

Hogwash 36

KNOW HOW

KDE Tricks 40

Rescue CD 44

Create your own customized bootable rescue CD.

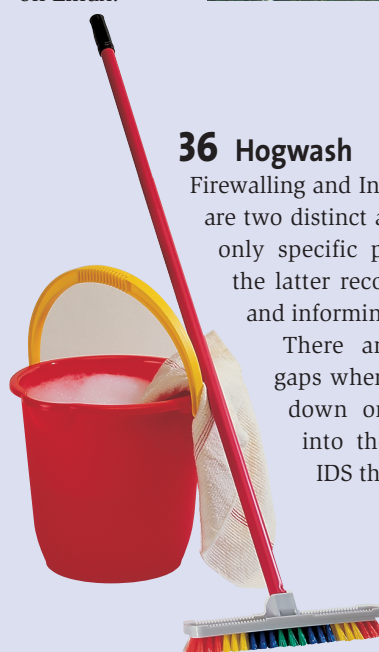
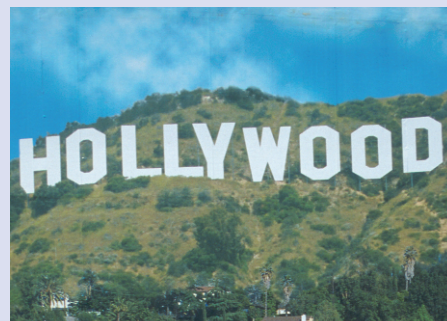
Gnuplot 47

Visualize data quickly and effectively in diagrams with this little-known tool.

20 Video Overview

Linux as a platform has been increasing in both usage and popularity in a number of different and varying areas. Although many see Linux as a primarily server based platform, it is becoming increasingly suitable as a multimedia production platform for a variety of types of media content.

We take a look at some of the software available to deal with video on Linux.



36 Hogwash

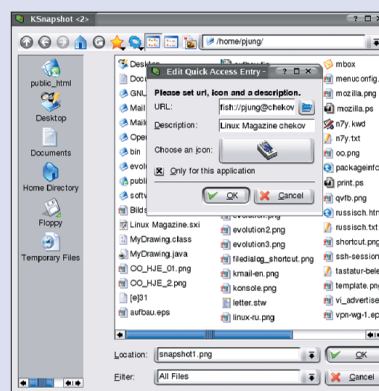
Firewalling and Intrusion Detection Systems are two distinct areas: the former allowing only specific packets and connections, the latter recognizing potential attacks and informing the admin.

There are scenarios of security gaps where IDS systems that clamp down on ongoing attacks come into their own. Hogwash is an IDS that implements this.

40 KDE tricks

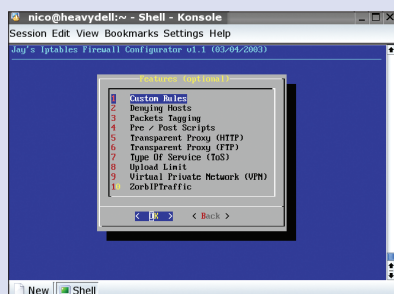
KDE developers get a bad conscience when it comes to documentation. Even if it's there – who reads a manual? Unfortunately a lot of interesting features remain hidden this way. A good reason to question KDE developers about their favorite not-so-well-known features.

Which is just what we did. We present all their favorite tricks to make your life better.



51 Firewalling with IPTables

Personal firewalls are here to stay, but for many users getting their firewall configuration right can be a genuine challenge. Modern kernels provide netfilter modules for firewalling tasks and use IPTables to configure them, and a variety

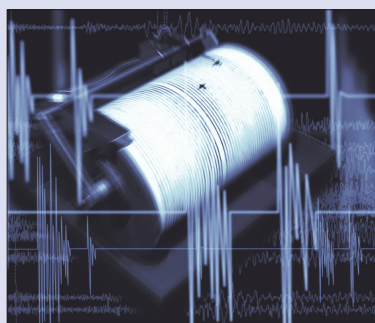


of GUI-based front-ends have been implemented to simplify the IPTables configuration process.

This article looks at four tools, which are distinguished by their GUIs.

76 gPS

The gPS process monitor stands for “graphical Process Status”. If you do not feel comfortable with the monitoring tools provided for KDE and GNOME by the major desktop distributions, or simply prefer smaller footprint alternatives, gPS might be just your choice of tool to help you search for resource hogs or keep an eye on server processes.



86 KDE Contributor Conference

Usually working in virtual teams, time spent together in person is precious to most Open Source projects. We asked contributors to the KDE projects what to expect from the KDE Contributor Conference in late August at the castle of the University of South Bohemia in the Czech Republic.



SYSADMIN

- Charly's column 50
- Firewalling with IPTables 51
- SMTP via TLS 54
Secure e-mail via the Transport Layer Security.
- System Installation Suite 56
Automate installations of a Linux system with ease.

PROGRAMMING

- Creating a game: Screen drawing 60
- SSE2 Processors 66

LINUX USER

- KTools: KEduca 72
Create multiple choice questions.
- DeskTOPIa: Panelizer 74
A panel with a tiny memory footprint.
- Out of the Box: gPS 76
- Command Line: pwd, cd, pushd, popd & dirs 78
Quickly navigate the directory jungle.
- Filesystems: I-Nodes & Blocks 80

COMMUNITY

- The Linux Zone, Birmingham 84
- OSCON & LinuxTag 85
- KDE Contributor Conference 86
- Free software projects 88
- Brave GNU World 91
- The User Group Pages 94

SERVICE

- Events / Advertiser Index / Call for Papers 96
- Subscription CD 97
- Next Month / Contact Info 98