



Linux Magazine DVD

installer offers a modern look & feel suitable for a modern system.

The default installation process is mostly automated. The individual phases are highly intuitive, and most hardware devices are automatically recognized and configured. Power users can still access any advanced configuration options at any point of the installation.

In addition to being able to resize NTFS partitions, the installation provides many unique features such as offering a range of file systems (including journalized file systems EXT3, ReiserFS, XFS, and encrypted file systems), setting up RAID disks, and resizing MS Windows FAT32 partitions.

The upgrade mode has again been improved to be more trouble-free.

Desktop

Mandrakelinux 10.0 offers a refined desktop look & feel with the specially written Mandrakegalaxy II theme. This provides consistency between all your applications in either the KDE or GNOME desktop environment. Easy to read anti-aliased fonts are now used in most applications.

New users can configure their graphical desktop settings and email system with the "Mandrakefirsttime" wizard.

The desktops have been made dynamic so that the desktop shows the correct icon as soon as new software or hardware is added. This applies to devices such as scanners and WebCams.

Magicdev lets users access removable media instantaneously without having to use the traditional "mount/umount" commands.

The menus have also been reorganized to provide consistency across different desktops.

Configuration

Several configuration utilities have been to-

tally revamped to add features and provide improved functionality such as the automatic detection and configuration of new hardware devices. Zeroconf is a new tool that allows two computers running versions 10.0 or 9.x to automatically configure their network settings.

System maintenance

The set of URPMI tools (urpmi, urpme), combined with the Software Manager and the MandrakeUpdate utilities, provide everything that you need to install and uninstall additional software packages.

Also on the DVD

The DVD from Linux Magazine includes a host of new features and applications that go to make Mandrakelinux 10.0 a very special product. The applications contain all you need from a Linux distribution, whether you want to use it as part of your office network, for Internet access, or just to run it as a general machine where you can relax and have fun playing games.

The new features include Magicdev, which can start the right application whenever you insert a CD or DVD in a drive. You can connect to your friends and family with Instant Messengers which are compatible with AOL, Yahoo and Microsoft.

Five levels of security can be set up on installation securing your machine.

The new version of Mandrakelinux provides many new great features. Mandrakelinux 10.0 is based on Linux kernel 2.6.3 and offers the most advanced Linux features currently available in terms of technology, as well as the most up-to-date software. New features include improved performance and scalability for servers, greater interoperability with the MS Windows world, plus numerous improvements & refinements to the user interface.

Mandrakelinux 10.0 is optimized for Pentium and higher processors, as well as their compatibles, and therefore does not run on earlier x86 CPUs.

Installation

Mandrake's installation process has long been one of the most widely-respected installers in the Linux field, yet it has been made even simpler and more powerful. It now offers great new features such as the ability to resize NTFS hard disk partitions, and automatic printer detection and setup. The graphical

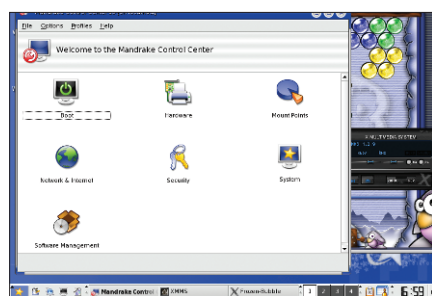


Figure 1: The new Control center makes admin easier.

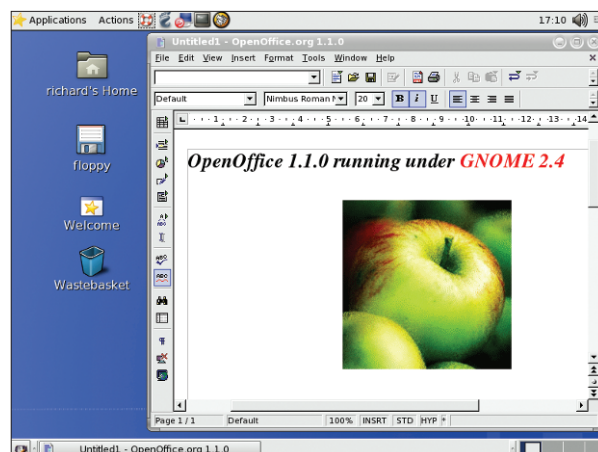


Figure 2: Mandrakelinux 10.0 running The GIMP for image editing.

Office applications

- OpenOffice.org
- KOffice
- GNUMERIC
- Scribus
- Karbon14
- Mozilla, Konqueror and Epiphany.
- GnuCash
- Plus many more

Multimedia and Games

- GnomeMeeting
- gPhoto and XawTV
- Mplayer, XMMS, Xine and Totem
- KDenlive
- The GIMP
- Grip and KAudioCreator
- Cdrecord and K3B
- FrozenBubble
- Chromium
- Tux Racer
- Educational and scientific software such as KEduka and many others

Intranet services

Including everything you need to install reliable network services such as the Apache 2 webserver. Samba now has better access to Windows 2000/XP/2003 systems. SpamAssassin helps you with efficient SPAM-filtering.

Easy Printing with CUPS

CUPS supports more printers: over 1000. Easy to configure, it can allow machines to access printers over the local network without any configuration by you.

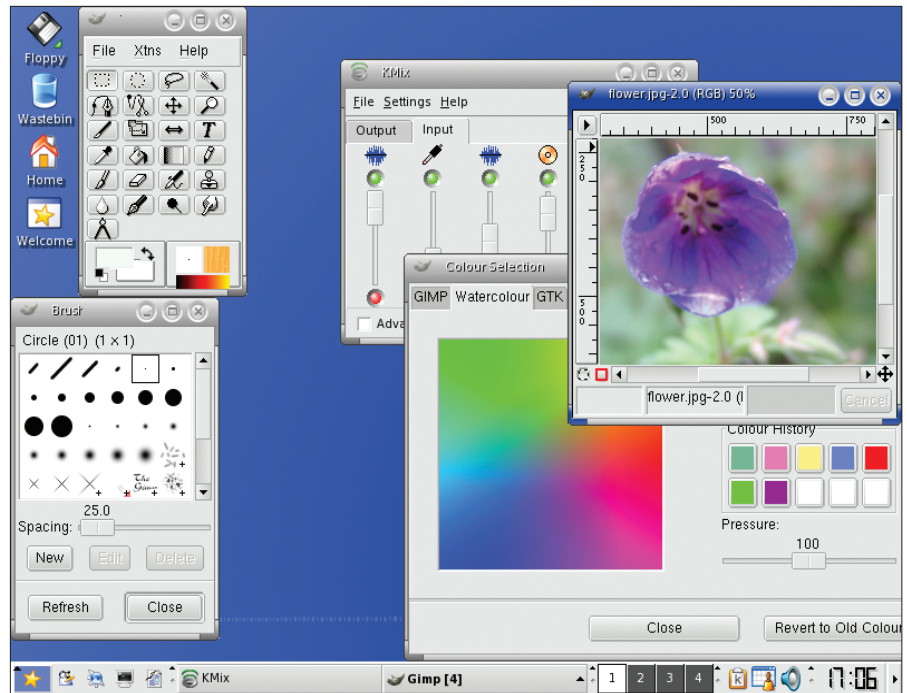


Figure 3: GNOME is just one of the desktop environments supplied.

Top-level Security

Shorewall is a complete firewall tool which is designed to be configured by just a few simple mouse clicks.

Everything for Development

- GCC
- PHP, Perl and Python
- GTK+ and Qt libraries
- Kaffe.
- Kdevelop.
- Quanta Plus
- Vim, Emacs and XEmacs

Official Packs

The complete range of Mandrakelinux 10.0 Official packs and box sets will be available in May 2004 and will provide documentation, manuals, support, third-party software and several additional professional features such as the Kolab server and various network management tools.

Full details about Mandrakelinux 10.0 Official packs will become available later on the Mandrake website at <http://www.mandrakesoft.com>

Recommended hardware

A complete list of supported hardware is available at <http://www.mandrakelinux.com/en/hardware.php3>

- Processor: an x86-class or above processor is required. This includes Intel Pentium I/II/III/IV, AMD K6/II/III, AMD Duron, AMD Athlon/XP/MP.
- Memory: at least 64 MB is required (32 MB for text-install); 128 MB or more is recommended.
- Hard disks: IDE and SCSI hard disks are supported.
- Hard disk size: At least 500MB is required, 1GB is recommended.
- Serial ATA: Most controllers are supported in non-RAID mode.
- SCSI controllers: most SCSI controllers are supported (Adaptec, Tekram, LSI Logic, Advansys...).

- RAID controllers: most RAID controllers are supported, excepted for IDE and Serial-ATA. 3Ware IDE and Serial-ATA RAID controllers are supported though.
- USB and USB 2.0: most USB devices are supported.
- CD-ROM and DVD-ROM drives and burners: Most IDE, SCSI, PCMCIA, IEEE 1394/FireWire models are supported (this includes DVD+RW and DVD-RW).
- Graphic cards: Most ISA, PCI and AGP cards are supported, including VESA, Nvidia, ATI(TM), 3DFX, SIS, S3, Matrox, Intel i865G, i85x, i81x i845G, Trident. 3D acceleration is available for Matrox G200/G400/G500, Voodoo III/V/ Banshee, Intel i8XX, ATI Rage 128/Pro & Radeon, Nvidia (GeForce and Nforce).

- Network adapters: All cards based on Intel, Realtek, 3COM, NVIDIA, Broadcom chipsets, and USB adapters are supported. Most PCMCIA, PCI and USB wireless network cards are supported.
- Sound Cards: All Sound Blaster-compatible soundcards, Sound Blaster/Ensoniq (Audigy, Live), X Wave, Crystal, Intel, AMD, NVIDIA force, VIA, CMI C-Media, ESS Maestro, Yamaha YMF744, Terratec, AC'97.
- Laptops: Most laptops are supported.
- Misc.: Numerous TV cards, all Wacom graphics tablets, many scanners, most web cams, digital cameras and FireWire devices are supported.
- Most "WinModems" are **not** supported.
- Most "WinPrinters" are **not** supported.