

LINUX

MAGAZINE

On this DVD:

Office Applications

- OpenOffice.org
- KOffice
- GNUMerics
- Scribus
- Karbon 14
- Mozilla, Konqueror, and Epiphany
- GnuCash
- Plus many more

Multimedia and Games

- GnomeMeeting
- gPhoto and XawTV
- Mplayer, XMMS, Xine, and Totem
- KDenlive
- The GIMP
- Grip and KAudioCreator
- Cdrrecord and K3B
- FrozenBubble
- Chromium
- Tux Racer
- Educational and scientific software such as KEDuCa, and many more

Easy Printing with CUPS

- Support for over 1000 printers
- Allows access to printers over local area networks

Intranet services

- Professional network services
- Apache 2
- Samba for access to MS Windows 2000 / XP / 2003 systems
- SpamAssassin for Spam filtering

Top-level Security

- Firewalling with Shorewall.
- Five levels of security settings easily selected

Development

- GCC
- PHP, Perl and Python
- GTK+ and Qt libraries
- Kdevelop
- Quanta Plus

System maintenance

- URPMM
- URPME
- MandrakeUpdate
- Software Manager

Configuration

Mandrakelinux has always been known for its excellent, easy-to-use configuration. With version 10.0, many of the configuration utilities have been totally revamped to offer more features and better functionality, such as automatically detecting and configuring new hardware devices.

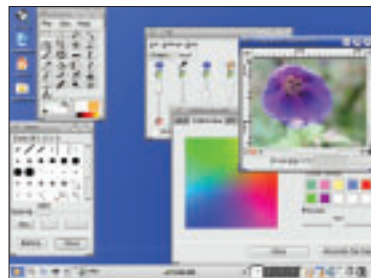


The new version of Mandrakelinux provides many new great features. It is based on Linux kernel 2.6.3 and offers the most advanced Linux features currently available – in terms of technology as well as the most up-to-date software. New features include improved performance and scalability for servers, greater interoperability with the MS Windows world, plus numerous improvements & refinements to the user interface. Mandrakelinux 10.0 is optimized for Pentium and higher processors and therefore does not run on earlier x86 CPUs.

Mandrake's installation process has long been one of the most widely respected installers in the Linux field, yet it has been made even simpler and more powerful. It offers great new features such as the ability to resize NTFS hard-disk partitions, and automatic printer detection and setup. The graphical installer offers a modern look & feel for a modern system.

The default installation process is mostly auto-

mated. The individual phases are highly intuitive, and most hardware devices are automatically recognized and configured. Power users can still access advanced configuration options at any point of the installation. In addition to being able to resize NTFS partitions, the installation procedure provides many unique features such as offering a range of file systems (including journaled file systems EXT3, ReiserFS, XFS, and encrypted file systems), setting up RAID disks, and resizing MS-Windows FAT32 partitions. Various network file systems are also supported such as NFS, SMB and WebDAV. The upgrade mode has again been improved to be more trouble-free.



LINUX MAGAZINE

ISSUE
42

Mandrake Linux 10.0



MAY
2004

THE MAGAZINE FOR ADVANCED LINUX KNOW-HOW

LINUX

MAGAZINE



Mandrake Linux 10.0

The most user-friendly distribution

Bootable DVD • the complete 10.0 package
Including all the latest software: 2.6 Kernel, KDE 3.2, ...

WWW.LINUX-MAGAZINE.COM

WWW.LINUX-MAGAZINE.COM

Disclaimer: This Linux Magazine DVD-ROM has been tested, and is to the best of our knowledge free of malicious software and defects. Linux Magazine cannot be held responsible, and is not liable for any disruption, loss, or damage to data and computer systems related to the use of this DVD and/or the software included on it.