

Linux Magazine DVD

Easy Internet access, upgraded applications

Suse has been well known among its followers for the easy-to-use configuration tool YaST. This acts as a graphical wizard for all your configuration needs, from installing software to using the online update facility to ensure that all the latest security enhancements and software patches are working on your system.

With just a few mouse clicks, you can download the latest software and patches as they become available or browse through the huge number of packages on the DVD.

One of Suse's major plus points is the incredible number of software packages that they supply – all ready to work on your system without you needing to configure or compile. That's not to say you cannot compile and develop software under Suse. Everything for a budding software writer to a development team is also on the disc.

For those who want to use the Internet, the choice is broad enough to satisfy all of your needs, with the best in

browsers, chat, messaging and email software at your fingertips.

Simple installation

The DVD is bootable in any compatible DVD drive. Simply place the disc in the drive and restart your machine. The graphical installation wizard makes it easy to setup the system to how you want it with all the software choices under your control.

Many laptop users will benefit from the new hardware detection and support. Suse Linux 9.0 supports a large number of WinModems, frequently provided with inexpensive laptops.

Included with Suse Linux 9.0 are KDE 3.1.4 and OpenOffice.org 1.1. Also, the KDE instant messenger "Kopete" now supports all common services such as AOL, MSN, IRC, ICQ, and Yahoo Messenger.

Office Power

OpenOffice.org, which includes central office applications for text processing, spreadsheets, presentations, drawings, formulas, and HTML editing, has been

Linux Magazine is delighted to include on this month's DVD, direct from Suse, the Suse Linux 9.0 Professional DVD. This contains all the programs you would expect plus many hundreds more that are software gems waiting for you to discover their uses.

Suse Linux 9.0 is based on a specially optimized version of the Linux 2.4.21 kernel, that enables users to benefit from many 2.6 kernel enhancements. These including improved scheduling, advanced Linux sound architecture and greater support for power management to extend the battery life of laptops.

For the technically skilled users, it also contains a test version of the 2.6 kernel which can be used to check if your hardware is compatible and could benefit from 2.6 kernel advances.

System requirements

SuSE Linux supports most modern PC hardware components, see http://cdb.suse.de//index.php?LANG=en_uk

Processor: Pentium® 1-4, AMD Duron, Athlon, Athlon XP, Athlon MP

RAM: 64 MB when using YaST2 (recommended: 128 MB)

Hard disk: 400 MB–6 GB (for full installation)

Graphics: Most modern graphics cards are supported including ATI Radeon 9200/9600/9800, nVidia GeForce 4, GeForce FX, Matrox G450/G550

Sound: Most standard cards and a number of professional cards are supported

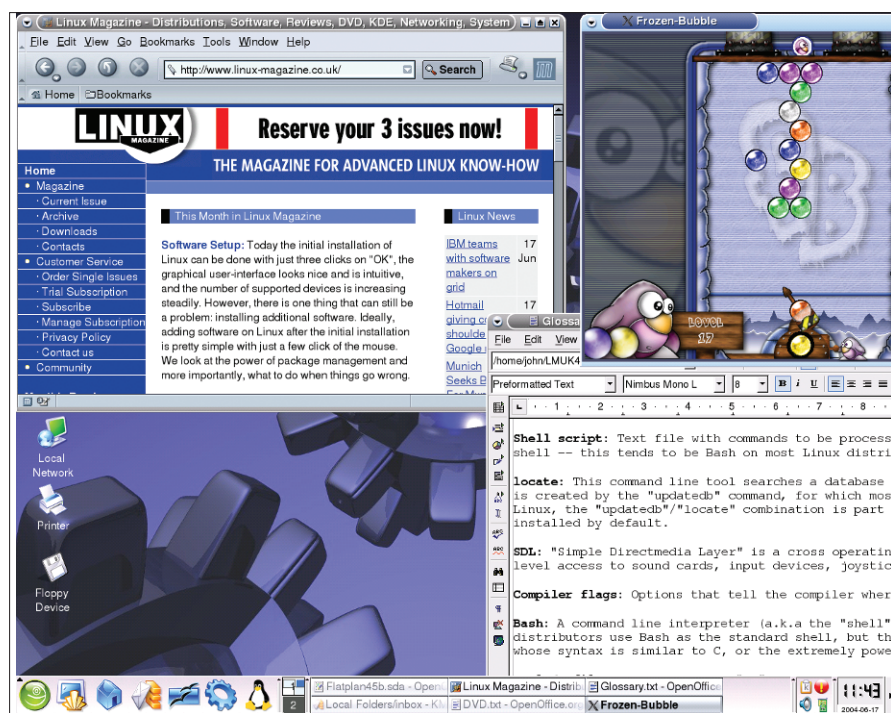


Figure 1: Suse 9.0 Professional is running the Mozilla browser, a copy of OpenOffice 1.1, for word processing, and the FrozenBubble game.

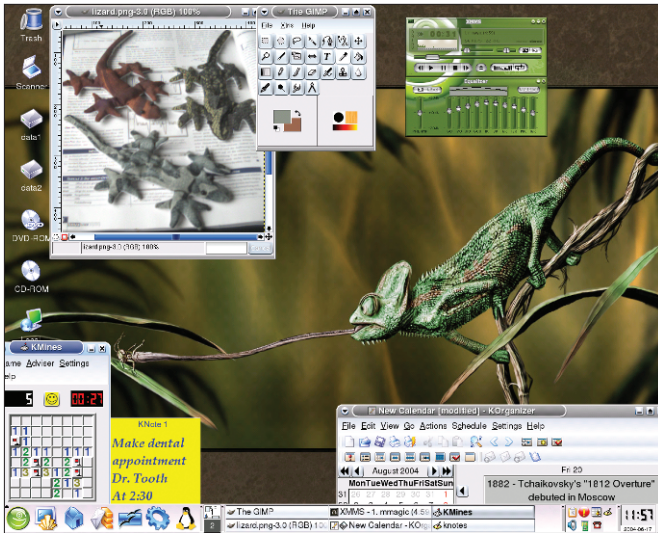


Figure 2: Running Xmms to play MP3s, GIMP for image manipulation, KNotes, KMines and a calendar program.

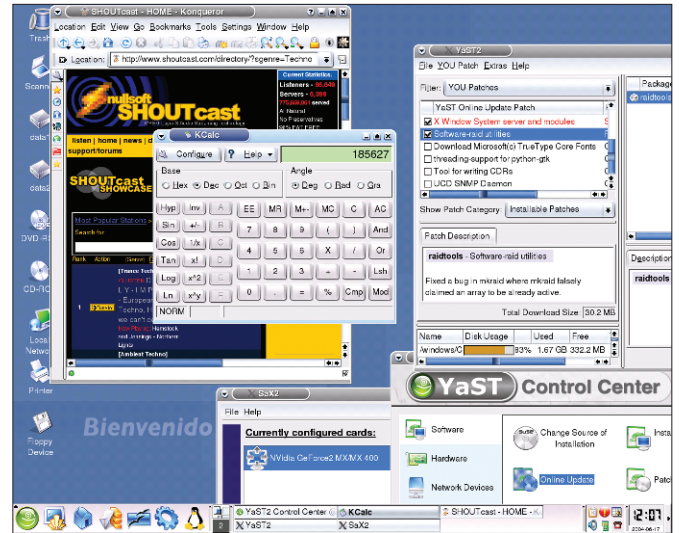


Figure 3: Here Konqueror is browsing a website while YaST is updating the system over the Internet.

improved. New features in version 1.1 include the export of PDF files with a mouse click, the import and export of all kinds of XML formats, and the export of presentations in flash format. A macro recorder enables the use of command sequences by means of a shortcut, e.g. for formatting texts and tables. Complex high-end layouts can be done with the Desktop Publishing program Scribus 1.0.

Just to show the power of this Suse 9.0 Professional DVD, this edition of Linux Magazine was produced and edited using the DVD and the software included on it!

Multimedia Bonanza

Although this DVD is mastered by Suse, there is nothing to stop you mastering your own DVDs with the graphical k3b application. This also caters for CDs so your latest demo discs can be sent to the record companies without delay.

Special Upgrade Offer

Save £22 on the update edition of Suse Linux Professional 9.1, including more than 1,000 applications on five CDs and two double-sided DVDs. The package includes 60 days of installation support and the detailed, easy-to-understand Administration Guide.

The upgrade costs £42.99 for Linux Magazine readers and is available from the Holborn Books Suse Store:

Web: www.holbornbooks.co.uk
 Phone: +44 1428 75148
 Email: susestore@holbornbooks.co.uk

Great package

What makes this DVD a wonderful system for you is that it is a full DVD with all the packages needed to work your system. It comes direct from Suse to ensure that all of the programs are included for your peace of mind. The complete set of programs means all the library components and dependencies are in one convenient place.

The improved YaST wizard tool helps make the installation, configuration and updating of your system simple, straightforward and easy. With its wide range of software applications you will never be left without the right tool for the job, no matter what that job is. From office work, email and Internet browsing, developing the first mission to Mars or just fun and games.

Suse Linux 9.0 Professional

<p>Graphical Desktop Environments</p> <ul style="list-style-type: none"> KDE 3.1.4 & GNOME 2.2 Desktop Sharing Framework (VNC) <p>Office</p> <ul style="list-style-type: none"> OpenOffice.org 1.1 with new features MS Exchange compatible organizer Read and write MS Office files Desktop Publishing with Scribus <p>Security</p> <ul style="list-style-type: none"> Firewall Mail encryption Encrypted hard disk partitions <p>Internet</p> <ul style="list-style-type: none"> E-mail applications Web browsing Create your own web pages <p>Mobile Computing</p> <ul style="list-style-type: none"> Palm synchronization Mobile computing location profiles WLAN & Firewire <p>Phone. Fax</p> <ul style="list-style-type: none"> Video conferencing Send fax messages & Answerphone with ISDN support 	<p>Multimedia</p> <ul style="list-style-type: none"> Play, rip and write CDs MP3 and movie players Write DVDs Hard disk recording with Audacity <p>Graphics</p> <ul style="list-style-type: none"> Image manipulation with GIMP 1.2 Developers' version of GIMP 1.3 Connects to digital cameras Image management Scanning with OCR support <p>Professional Components</p> <ul style="list-style-type: none"> Kernel 2.4.21 Kernel 2.6 GCC 3.3.1 Sun Java 1.4.1 Apache 2.0.47 Development environments LDAP server NIS server & client NFS server & client Samba server & client 4 journaling systems VPN VNC terminal server
---	---