



Service Menus for Konqueror

Service, please!

A handful of service menus prove just how valuable the right mouse button can be. We look at ways of making life with the KDE file manager easier.

BY STEFANIE TEUFEL

by adding the ability to delete any temporary backup files, which many text editors and other programs create while working on a file, by simply clicking with the mouse.

You may already appreciate how important backup files that end with a tilde character (~) can be, for example, when you lose your latest modifications to a file for lack of a backup. Although they can prevent sleepless nights, backup files have

one drawback: they can take up a lot of your precious hard disk space.

To facilitate the simple cleanup task, unpack the `13685-cleanbak-1.0.2.tar.bz2` package. This can be done, for example, by typing:

```
bunzip2 -c 13685-cleanbak-1.0.2.tar.bz2 | tar xvf -
```

and changing to the directory created by this step, `cleanbak-1.0.2`. The software comes complete with a GUI-based install tool, which unfortunately tends to “forget” to create the installation directory. If Cleanbak is the first service menu you have created, and you need the tool for your own personal use rather than global access, the following line should do the trick of creating the necessary directory:

```
mkdir ~/.kde/share/apps/konqueror/servicemenus
```

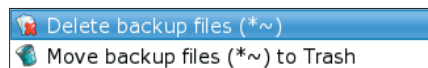


Figure 1: Cleanbak helps you get rid of unwanted backup files at the click of the mouse.

Go on to run `./install.sh`, and say *No*, when asked if you want to *Install the servicemenu globally?*.

Your Konqueror context menu should now have two new entries below *Actions*

| *Clean Backup File* (see Figure 1). Clicking on *Delete backup files (*~)* will delete any files that end with a tilde (~) in the selected directory. But you can opt to *Move backup files (*~) to Trash*, to move them to the trashcan just in case.

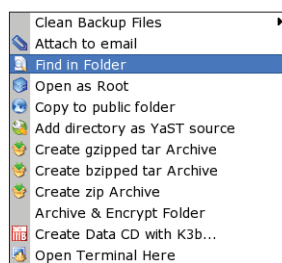


Figure 2: Raiders of the lost file...

Seek and Ye Shall Find

To add an *Actions | Find in Folder...* entry to your file manager context menu, you will need the `11544-find_in_folder.desktop.tar.bz2` package from <http://www.kde-apps.org/content/download.php?content=11544>. The package contains a single file `find_in_folder.desktop`, which you just need to copy to `~/.kde/share/apps/konqueror/servicemenus` (or `$KDEDIR/share/apps/konqueror/servicemenus` to make the entry available globally).

Clicking on the entry, as shown in Figure 2, will open the `kfind` program in the current directory, thus providing convenient file searching capabilities.

Attached

Many files are just too useful, or too pretty, to keep them all to yourself. Why

The right button is definitely the right approach, if you want to benefit from the huge selection of extensions that Konqueror **context menus** can offer. These otherwise hidden “service menus” can help you master daily chores and make working with your Linux desktop a much more enjoyable experience.

Tidying Up

One of these items is called *Clean Backup Files*. It is available as a small 7.6KBytes download from the Web site at <http://www.kde-apps.org/content/download.php?content=13685>. *Clean Backup Files* extends the context menu

KTools

In this column we present tools, month by month, which have proven to be especially useful when working under KDE, solve a problem which otherwise is deliberately ignored, or are just some of the nicer things in life, which – once discovered – you would not want to do without.

GLOSSARY

Context menu: A menu that pops up in a graphical user interface when the user right clicks. The menu items change to reflect the individual context.

not share, by mailing them to a good friend? Adding the *mail_as_attachment.desktop* file to the appropriate *servicemenu* directory, allows you to right click the file you want to mail, and select *Actions | Mail as attachment...* This will bring up *kmail* with the selected file already attached to an email message, which you still need to write, of course.

The attachment tool is available as a download from <http://www.kde-apps.org/content/download.php?content=13280>. To unpack, simply type:

```
unzip 13280-mail_as_attachment-0.1.zip
```

This will place the *mail_as_attachment.desktop* file in a subdirectory called *mail_as_attachment*.

If you want to mail multiple files as attachments, you might prefer to check out the *Attach to Email Service Menu*, which allows you to attach complete directories (see Figure 4 below right). Another good thing: the tool, which is available from <http://www.kde-apps.org/content/download.php?content=11234>, not only works with *kmail*, but with other email clients, should you prefer to use them.

The install script included in the *11234-attach-to-email-servicemenu.tar.bz2* archive has parameters for a global install:

```
./install.sh --global-install
```

./install.sh --local-install will restrict the tool your own personal Konqueror context menu.

If do not use *Kmail*, you need to select *Use a different email client* below *KDE Components | Component Chooser | Email client* in the KDE Control Center, and specify your email program of choice. In future, whenever you select *Actions | Attach to Email*, the attachment helper will call your favorite email program.

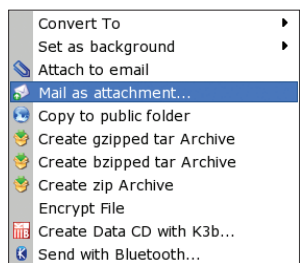


Figure 3: This useful helper makes child's play of mailing email attachments.

Background

If while browsing you stumble across an image that perfectly matches your current mood, and would thus make the perfect background, you can save yourself the detour via the Control Center by installing the *Set as background service*. The package is available as a download from <http://www.kde-apps.org/content/download.php?content=12469>.

You need to unpack the archive (using *tar -xvzf 12469-setbackground.tar.gz*), and then run the install script provided by the developers to choose between a global (*./install.sh --global-install* in the *setbackground* directory) or single-user installation (*./install.sh --user-install*).

The service menu demonstrates its “background knowledge” when you right click an image file. *Actions | Set as background* (see Figure 5) gives you a shortcut to the normal steps in the KDE Control Center: *Appearance | Background*. You can opt to tile the background image (*Tiled*), or you might prefer a (*Centered*) image – just click on the appropriate menu entry, and your wish is KDE's command.

Becoming “root”

To edit some files, global configuration

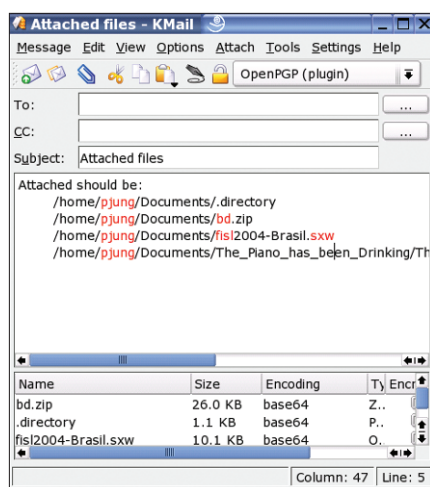


Figure 4: The “Attach to Email Service Menu” can attach whole directories, and add a note to that effect to the email message.

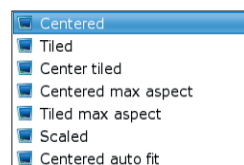


Figure 5: Changing the desktop appearance.

files for example, or run system management programs, the current user needs to be *root*. There are two service menus that prompt you for the *root* password when you right click, and switch to admin mode if you supply appropriate credentials.

Edit as Root (<http://www.kde-apps.org/content/download.php?content=11998>) opens the selected file in *kwrite*, when you click

Actions | Edit as Root, assuming that you enter the right password in the dialog.

The fact that the archive file, called *11998-edit as SU.desktop.tar.gz*, is actually a simple *tar* archive without *gzip* compression can be confusing. So just say *tar -xvf* to unpack.

The “Run As Root” service menus (<http://www.kde-apps.org/content/download.php?content=11227>) follow a similar approach. The two files in the archive *open as SU.desktop* and *run as SU.desktop* add two entries to the Konqueror context menu *Actions | Open as root* and *Actions | Run as root*.

KDE Extractor

Extract to Subdirectory, which you can download from <http://www.kde-apps.org/content/download.php?content=13544>, is another interesting tool. After completing the install, you can simply right click an archive file that you want to upack, and select *Actions | Extract to subdirectory*. This tells KDE to create a subdirectory with the same name, but without the extension, and place the archive content in that directory.

For example, this creates a directory called *11256-Make Executable* for the *11256-Make Executable.tar.bz2* archive from <http://www.kde-apps.org/content/download.php?content=11256>. The install script provided with the archive is only suitable for a global install on Suse, so you might prefer to manually copy *make_executable.desktop* to the appropriate *servicemenu* directory if you are using another Linux distribution.

After doing so, you can right click files that can be made executable, and select *Action | Make file executable* and *Action | Make file non-executable*. ■