

## Letters to the editor

# Write access

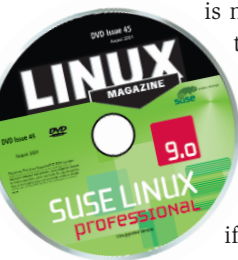
## ■ DVD Worldwide Available?

I do really love to read Linux Magazine. I would like to buy it from the newsagent or book store. Unfortunately, the DVD is not included in the international edition.

Why don't you include the DVD for the international edition?

I love the articles inside Linux Magazine, I believe, if you could attach the DVD together with the magazine, it would attract more people to read Linux Magazine.

Danny Sutikno, Sydney, Australia



**LM** So far, the Linux Magazine DVD has only been included on the newsstand in the UK and with DVD subscriptions. Due to varying newsstand specifications (Linux Magazine is sold in over 50 countries), logistical costs and other issues, we didn't feel that we could include the DVD in all newsstand copies and still keep the price reasonable.

We have now found a solution that should work for everyone. Starting with this issue, all worldwide newsstand copies of the magazine will include the DVD. Outside the UK, the DVD will be bound into the magazine in a paper sleeve, which also helps to keep the price low.

Subscribers will still receive the DVD in a case as in the past. ■

## ■ Losing vision

I am losing my eyesight. Is there any Linux software that I will still be able to use.

Mr Williamson, Letter

**LM** The quick answer is yes, but it depends on your level of vision. For those completely blind, there is the Blinux distribution and information point at <http://leb.net/blinux/> and Zip-Speak. Braille drivers do exist for those that have access to a braille device and can read the output.

Screen readers are speech synthesizers that can convert most forms of text on a screen to sound output. Under Windows the most popular version is JAWS, but for Linux we have Emacspeak and Screader <http://www.euronet.nl/~acj/eng-screader.html>. Software only speech synthesizers exist such as Festival which will even work with GAIM, an instant messenger client.

With a little more vision you can make use of Screen Magnifiers. These can be found on most desktops and include Kmag, Gmag, Puff and Xzoom. Using Ctrl-Alt-+ can normally adjust the screen resolution. Running 800x640 on a 19" monitor makes it readable at a greater distance. Mozilla has the View/Text Zoom function which can get around much tiny text on poorly configured web pages. ■

## ■ POP3 Antispam with KMail

I had just read the article "One Step Ahead" in the cover story section of Issue #46 / September. Upon my return from the weekend getaway, where I used some of the free time to catch up on my favorite magazines, I headed straight for my notebook with plans to rid my mobile Linux box of spam.

The distro I use is Suse 9.1, I also use KMail 1.6.2 with Kontact GroupWare. Just as I was about to get going with Kshowmail, I noticed that I could create pop3 filters from KMail. This is probably a terrible question, but couldn't I use this feature instead Kshowmail to delete spam directly from pop3 Servers? Will it really work? I realize that being new to Linux (1.5 years) it's very likely that this is a terrible question.

Ventrice Humphrey, by email

**LM** It is not a terrible question. You can use KMail to filter out the spam. In KMail you need to config-



Please send your comments and suggestions to [letters@linux-magazine.com](mailto:letters@linux-magazine.com)

ure the KMail | Network | Receiving to "Filter messages if they are greater than 1byte".

You can now set the POP3 filter to either "Download mail later" or "Delete mail from server". Like all filtering, if you delete a message directly from the server, you have no second chance to find out if it is a false positive result. ■

## ■ Hidden user

How can I make a login for root under KDE?

Christian de Silva, London

**LM** Use the KDE control center and choose the System Administration option. Now choose the Login Manager and the fifth tab "Users".

To make use of this screen you will need to enter the Administration mode (button bottom left) and enter the root password. You can now select to unhide Root from the opening display manager. ■

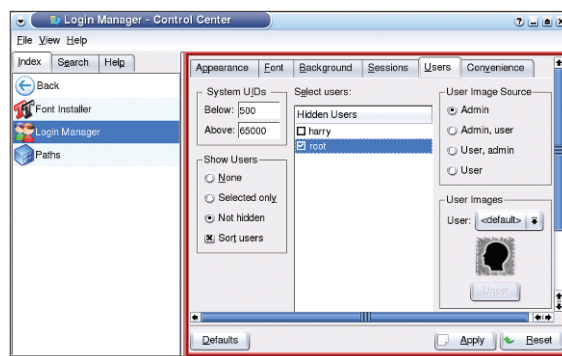


Figure 1: Unhide root, to make it visible for a graphical login.