

On this DVD:

Knoppix 3.4

A live CD system that does not touch your hard disk. It will boot with the 2.4.26 Linux kernel, but you can opt for the new 2.6.5 kernel when booting.

Keep up with functionality by running KDE 3.2.2 with the new Gimp 2.0 as your desktop environment.

Hardware detection has been extended to feature WiFi cards and IrDA/Bluetooth configuration.

Knoppix is fantastic for letting non-Linux users see the power of Linux. Of course you can install it onto a hard disk so it runs faster. With over 900 software packages, including Open Office 1.1.1, we are sure you will find something that suits your needs.

Gnoppix 0.60Rc2

The Gnoppix distribution is a LiveCD based Debian GNU/Linux 3.0.

It can be compared to Knoppix but, where Knoppix uses KDE, Gnoppix uses GNOME as a desktop environment.

With its GUI installation tool it has never been easier to set up a Debian system with a GNOME desktop.

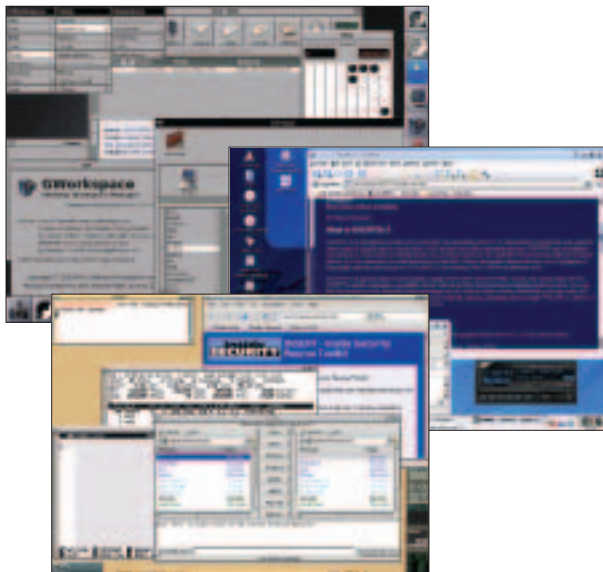
Kanotix 07-2004-A

Kanotix is a complete distribution based on Debian/Sid. It is optimized for hard disk installation.

Many WLAN drivers have been added including NdisWrapper (see inside this issue of Linux Magazine for more information). It contains the 2.6.6 Linux kernel and is designed for 586 or better processors.

System Requirements

Bootable DVD drive, VGA compatible graphics adapter, 64 MBytes RAM / 200 MBytes hard disk space for text only system (192 MBytes RAM, 2 GBBytes hard disk space for graphical system)



Knoppix STD

Knoppix-STD is a customized Linux distribution based on Knoppix. It aims to provide a security-enhanced version of the LiveCD, focusing on information security and network management tools. It is meant to be used both by the novice and the security professional.

Its utilities are divided into groups of topics including: authentication, encryption, forensics, firewall, honeypots, and many more.

GNUstep

GNUstep is a free implementation of the OPENSTEP framework. The GNUstep LiveCD has plenty of software for GNUstep. Displaying Postscript is one of its powerful features.

The system includes a Rapid Application Development tool called Gorm.

ZoneCD

Based on Morphix, the ZoneCD offers a free WiFi access solution. It has been designed to implement safe, free, WiFi hotspots. The ZoneCD can be used by all levels of free WiFi providers, from experienced programmers to those who are just beginning.

The system is pre-configured to create a WiFi gateway with automatic hardware detection that includes support for end-user authentication and web content filtering.

Insert 1.2.14

The Inside Security Rescue Toolkit is small in size. At under 50MBytes it can easily be burnt onto a business-card CD.

With a fast Internet connection, you can use the Installer option to download and run a Mozilla browser.



Testing, Troubleshooting, Security and more:

- Knoppix 3.4
- Kanotix
- Gnoppix
- Knoppix STD
- ZoneCD
- GNUstep