

NEWS

Software ..... 6  
 Business ..... 10  
 World ..... 12  
 Insecurity ..... 14  
 Kernel ..... 16  
 Letters ..... 18

COVER STORY

Scripting Secrets Intro ..... 19  
 Bash scripting ..... 20  
 A useful script for monitoring web servers, along with some tricks of the trade.  
 AWK ..... 30  
 Text files formatted as tables are easily searched and modified using AWK.  
 Perl 6 Preview ..... 33

REVIEWS

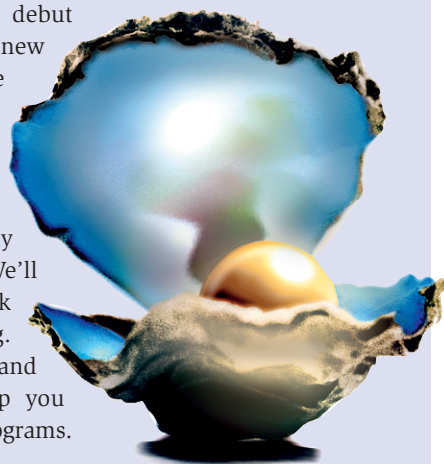
Kanotix ..... 38  
 Does Kanotix really out-knopp Knoppix?  
 Mounting NTFS ..... 40

KNOW HOW

APM and ACPI ..... 43  
 Yum Package Manager ..... 48  
 Fedora uses the YUM tool for updating packages.  
 Palmtop Synchronization ..... 50  
 Synchronizing palmtops with Linux desktops.  
 Linux for Layout: Scribus ..... 53  
 You don't really need a Mac for professional layout.  
 ImageMagic ..... 58  
 Using ImageMagick to edit images with text commands.

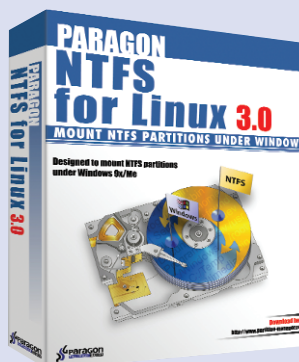
33 Perl 6 Preview

Perl users are anxiously awaiting the arrival of Perl 6 – a brand new Perl, which is still in development but will debut sometime soon. The new language has been the subject of several conferences, and two books have already been written about it. But what do you really know about Perl 6? We'll give you a sneak peek at the new Perl rising. Find out what is new and how Perl 6 will help you write more elegant programs.



40 Mounting NTFS

The Windows File System NTFS used to be out of reach for Linux users, but some new tools have appeared that make it easier to access NTFS partitions from Linux. The Linux



kernel even has some experimental support for NTFS partitions, but you may be looking for something more reliable. In this article, you'll learn about Paragon Software Group's NTFS for Linux. We'll also look at Captive, a GPL-licensed tool that supports Windows drivers.

43 APM and ACPI

Linux runs well on laptops, but vendors don't build portables with Linux in mind, so you may be on your own for configuration support. The power management configuration requires some special attention. We look at two major power management standards: *Advanced Power Management* (APM) and *Advanced Configuration and Power Interface* (ACPI). We'll show you what works and what doesn't, and how to get the most from power management in Linux.

